

N.W. Posthumus Institute of Economic and Social History, Groningen  
and  
Hitotsubashi University 21st Century Program, Research Unit for Statistical Analysis in Social  
Sciences, the Institute of Economic Research, Hitotsubashi University

*Technology and Long-run Economic Growth in Asia*

**Estimates of the Long-run Economic Growth of  
Taiwan Based on Revised SNA (1901-2000) Statistics**

**Toshiyuki Mizoguchi**

September 9th, 2005  
Sano-Shoin, Hitotsubashi University,  
Kunitachi, Tokyo

# Estimates of the Long-run Economic Growth of Taiwan Based on Revised SNA (1901-2000) Statistics

Toshiyuki MIZOGUCHI  
(Hiroshima University of Economics)

## ( 1 ) Introduction

The Taiwanese economy has achieved rapid growth since the end of the Second World War (WWII). The annual growth rate of GDP was about 8.3% from 1950 to 2000 according to the estimates by DGBAS (Directorate-General of Budget, Accounting and Statistics).<sup>1</sup> In an earlier paper, we suggested that the economy grew steadily but at a moderate pace before WWII.<sup>2</sup> The annual rate of real GDP growth was about 3.5% from 1905 to 1940. This growth was accompanied by changes in industrial structure. The composition of GDE also varied as the real GDP increased.

In this paper, we provide data for studies on the economic growth of Taiwan from 1901 to 2000 on the basis of SNA estimates. For this purpose, it is necessary to construct a database containing long-run time-series economic data. The amount of information available differs over time. Five periods can be distinguished: (a) 1901-1911, (b) 1912-1940, (c) 1941-1950, (d) 1951-1960 and (e) 1961-2000. DGBAS has published official SNA reports for periods (d) and (e) and economic data are therefore abundant. Data for period (c) are scarce and less reliable. Fortunately, semi-official estimates of the production accounts were published by the staff of DGBAS during this period. Official SNA estimates were not published for period (b), but relatively large amounts of basic data were published by the Government General of Taiwan. Also available are a number of academic studies providing estimates of SNA series for this period. Data are scarce and less reliable for period (a), so our estimates here remain preliminary.

In this paper, we examine previous contributions and consolidate them into long-run SNA tables. Some additional estimates are required for this purpose as is shown in the next section. These SNA tables and additional estimates will be published by Toyo Keizai Shinposha in Japanese in the near future and the contents of this book are shown in the appendix of this paper.

---

<sup>1</sup> ) Directorate-General of Budget, Accounting and Statistics Report of National Income Statistics, 1995, 1995. and Report of National Income Statistics, 2001, 2001.

<sup>2</sup> ) Mizoguchi, Toshiyuki “Long-term National Accounts Data-base of Japan, Taiwan and Korea” in Odaka, Konosuke, Yukihiro Kiyokawa and Masaki Kuboniwa (eds) Constructing a Historical Macroeconomic Database for Trans-Asian Regions (International Research Workshop on the Asian Historical Statistics Database), Institute of Economic Research, Hitotsubashi University.

## (2) Review of Previous Estimates

Our objective is to estimate long-run SNA statistics for the twentieth century (1901-2000). Various kinds of basic data are necessary to obtain consistent series. However, as the amount of information available for each period differs, the method of estimation also varies by period.

### (2.1) Official Estimates of SNA (1951-2000)

For this period, we rely on the SNA officially published by DGBAS.<sup>3</sup> In the 1950s and 1960s, most developed countries constructed national income statistics following the system recommended by the United Nations in 1952. In 1953, DGBAS began preparing national income statistics on an annual basis for the Taiwan Area starting from 1951. The system was improved through discussions with and review by economists and adjusted to the special needs and circumstances of Taiwan. The Commission on National Income Statistics has played an important role in these improvements since 1965.

The United Nations revised the standard national economic accounts system in 1968 (68SNA), combining national income statistics, I-O tables, flow of funds accounts, etc. In Taiwan, the system was implemented in 1986. Nominal and real series are classified into three accounts (i.e. production, expenditure, and distribution accounts). They have been revised every five years and linked to previous estimates. It is fortunate for our purposes that the DGBAS has published retroactive SNA series back to 1951.<sup>4</sup>

We can safely use the official SNA series as our basic information for periods (d) and (e) mentioned in Section 1. But some remarks on the characteristics of Taiwanese SNA data are still in order here. The first concerns the application of the commodity flow method. While the UN recommends that the commodity flow method be adopted for the estimation of 68SNA statistics, DGBAS follows a family budget data approach to estimate private consumption expenditure. Data on capital expenditure are used to estimate capital formation by enterprises.

The second remark concerns the treatment of statistical discrepancies. Theoretically speaking, the three accounts of the SNA should be balanced. But owing to the scarcity of information, some gaps are found between accounts. There are two

---

<sup>3</sup>) Regarding the development of National Accounts in Taiwan, see the preface of DGBAS, National Income in Taiwan Area of the Republic of China, 1996: National Accounts for 1951-1995.

<sup>4</sup>) See DGBAS, National Income in Taiwan Area of the Republic of China, 1996: National Accounts for 1951-1995.

possible ways to address the problem. One is to settle the item of 'statistical discrepancies' in the SNA tables. The other is to adjust estimates to make the discrepancies zero. In the Taiwanese SNA reports, the estimates seem to be adjusted not only in the nominal accounts but also in the real accounts.

The third remark concerns the revision of estimates. In Taiwan, SNA estimates have been revised every five years. In these revisions, both nominal and real values were revised back to the previous revision year. The nominal values before the previous revision were left untouched. In each revision, the base year of deflators was newly settled, so the real figures were also revised back to 1951. But the old estimates of real GDP (or GDE) were linked to the new estimates under the condition that the growth rate of real GDP (or GDE) be kept the same as on the basis of the previous base year.

Finally, a comment should be made here on the estimates for period (d). Because the national income estimates were carried out on the basis of 1952 SNA in the 1950s, there were insufficient basic data to obtain the retrospective series based on the 68SNA. The implicit deflators were not published for the pre-1960 production accounts. There are some gaps between the pre-1960 and the post-1961 data. Some minor corrections are necessary for the pre-1960 series to make the linkage more reliable.

## (2.2) Estimates of SNA (1912-1950)

Since no official SNA estimates for period (b) and (c) have been published, it is necessary to construct our own SNA tables referring to previous studies. Several SNA estimates for period (b) are available. Regarding production accounts, the pioneering work is the appendix of Teng-hui Lee's PhD dissertation in 1966 cited in Samuel Ho's review.<sup>5</sup> However, details of the method of estimation were not published. The JCRR (Joint Committee of Rural Reconstruction) examined long-run series of agricultural production data by the Government General of Taiwan, Japan and the Provincial Government of Taiwan, Republic of China. The JCRR constructed nominal and real series of value added for periods (b), (c) and (d).<sup>6</sup> Shinohara examined manufacturing

---

<sup>5</sup>) Lee, Teng-hui Intersectoral Flows in the Economic Development of Taiwan, 1895 - 1960, PhD dissertation in Cornell University cited by Samuel P.S. Ho Economic Development of Taiwan, 1860-1970, Yale University Press, 1978.

<sup>6</sup>) Chen, Yueh-en and You-tsao Wang (1982) "Secular Trend of Output, Input and Productivity: A Quantitative Analysis of Agricultural Development in Taiwan" in Hou, Chi-ming and Tzong-shian Yu (eds.) Agricultural Development in China, Japan and Korea, Academia Sinica. See also Shigeru Ishikawa, Estimates of Agricultural Production (Database), Discussion Paper, Institute of Economic Research, 1970. The JCRR work greatly depends on Ishikawa's work.

production data in period (b), while Ho provided estimates of the production index of manufacturing for periods (b), (c) and (d).<sup>7</sup>

Wu published the first firm production accounts for periods (b) and (c).<sup>8</sup> Based on previous results on primary and secondary industry, Wu tried to complete the production accounts including tertiary industry and government services. Wu estimated the value added of the transport and communication industry and the government sector following orthodox methods. As is well known, historical data are scarce on other tertiary industries such as wholesale and retail trade and service industry. Wu overcame such difficulties using the information of regressions on postwar data. The results are very useful to provide a general indication of economic trends in Taiwan during periods (b) and (c).

However, two tasks remain. The first is a detailed study on period (c). After the end of WWII, Taiwan suffered economic and social confusion as well as bouts of rapid inflation, so that some margin of error seems inevitable in estimates for this period. The staff of DGBAS tried to estimate production accounts for the period 1938 to 1951,<sup>9</sup> adopting the 1951 official GDP accounts as the benchmark data, and extrapolating them to 1938 using fragmental information.

The second problem concerns Wu's estimates of tertiary industry production. His work is a remarkable achievement, presenting the first systematic estimates of production accounts. Methodologically, the use of regression methods is an interesting approach to filling the gaps in historical data. But it is also true that there remain areas to be reexamined using more orthodox approaches. One example is the new estimate of government service provided by Li.<sup>10</sup> It is also possible to estimate the value added of traditional service sectors. These estimates are discussed in more detail in the following section.

Several estimates of expenditure accounts for period (b) are available. Terasaki provided an estimate of nominal private consumption based on the commodity flow

---

<sup>7</sup> Shinohara, Miyoehei "Estimates of Manufacturing Production (Database)", Discussion Paper, Institute of Economic Research, 1969. See also Ho (1978).

<sup>8</sup> ) Wu, Tsong-Win "An Estimate of Taiwan's Gross Domestic Product, 1910-1950", Taiwan Economic Review, 19-2, 1991.

<sup>9</sup> ) Kuo, Fong-Yew, Chen-Yen Tsui, Ming-Tzu Lin and Grace Jong "Estimates of Gross Domestic Product: 1937-1950" in Taiwan National University, Department of Economics, and DGBAS Proceedings of Conference on the Economic Conditions in the 1940's Taiwan, 1997.

<sup>10</sup> ) Li, Jian Chen "An Estimate of Value Added in the Government Section", Discussion Paper, Taiwan National University, 2001(in Chinese).

method.<sup>11</sup> Emi and Mizoguchi examined capital formation for period (b).<sup>12</sup> Nojima constructed a database on Taiwanese foreign trade classified according to the International Standard Classification.<sup>13</sup> These studies can be used in our long-run estimates of SNA series.

### (3) Construction of the Long-run SNA Database

This section aims to revise previous estimates of Taiwanese GDP from 1901 to 1940 and to link them with the post-WWII series (1951-2000) provided by DGBAS and the semi-official GDP estimates for 1938-1951 by the staff of DGBAS. We tried to tackle this issue previously, but the work remained at a preliminary stage.<sup>14</sup> Two kinds of tasks are required. The first task of this section is to improve the estimates of SNA series for periods (a) and (b). Agricultural production and manufacturing industry production data have been examined in detail in previous studies, and these output estimates can be used as the basic data. But it is necessary to re-examine the output of the other industries. Regarding the expenditure accounts, some revisions are also required. The second task is to construct the long-run SNA accounts based on 68SNA. In the process, we confront the problem how to reconcile the matrix consistency in the SNA with the revisions of base years. The problem is more serious in our long-run SNA series than in the case of the official estimates used in the short-term comparisons.

#### (3.1) Revisions of Previous Estimates

In our revision of estimates for period (b), we can adopt the 1940 data of the semi-official SNA data as the bench mark figures. While there have been a large number of revisions of the methodology, we here report only the major improvements. Regarding the output of the transportation industry in the pre-WWII period, Wu published good estimates using railway transportation data.<sup>15</sup> We tried to revise his

---

<sup>11</sup>) Terasaki, Yasuhiro, "Estimate of Consumption Level of Taiwan, 1912-1938", Journal of the Department of Arts and Science of Nagasaki University, 21-2, 1981.

<sup>12</sup>) Mizoguchi, T. Economic Growth of Taiwan and Korea, Iwanami shoten, 1976 (in Japanese). Emi, Koichi "Capital Formation by Government General of Taiwan", Discussion Paper, Institute of Economic Research, Hitotsubashi University, 1973 (in Japanese).

<sup>13</sup>) Nojima, Noriyuki "Database on Foreign Trade of Taiwan", HUE Journal of Economics, 21-4, 1999 (in Japanese).

<sup>14</sup>) Mizoguchi, T. "A Long-term National Accounts Database of Japan, Taiwan and Korea", in Odaka, Konosuke, Yukihiro Kiyokawa and Masaaki Kuboniwa (eds.) Constructing a Historical Macroeconomic Database for Trans-Asian Regions, Institute of Economic Research, Hitotsubashi University, 2000.

<sup>15</sup>) See footnote 8.

estimates using the traditional transportation data shown in the administrative reports by the Police Bureau, the Government General of Taiwan.<sup>16</sup> The results can be calculated both in nominal and real terms.

There are few data on the output of the wholesale and retail sale industry. We divide the 1940 output figure into (1) wholesale, (2) retail, and (3) foreign trade, and then extrapolate using the indexes of the corresponding activities.<sup>17</sup> The output of the construction industry is also estimated by extrapolating the benchmark figures. The reference index for the extrapolation is the real construction investment index in the expenditure accounts, obtained by the commodity flow method.

In previous estimates, the output of the financial industry was assumed to be zero because most bank income is canceled out by the imputed interest (a minus item in the SNA). In our revision, we explicitly include the output of the financial industry. Further, output was estimated for the insurance industry and traditional financial industry. The output estimate for the real estate industry remains less reliable than for other industries. Owing to the scarcity of housing data, the imputed rent of own houses in 1940 was extrapolated using total private consumption expenditure.

The service industry is composed of household services and business services. Output of the former is taken from the services expenditure in the private consumption data. The latter output is estimated by using the number of professionals registered with the Police Bureau of the Government General of Taiwan. The estimate of government services is based on Lee's paper.<sup>18</sup> In his estimate, the output of government services increased significantly after 1950, but this was the result of definitional modifications. Before 1949, defense expenditures were not included in the GDE of Taiwan because they were part of the budget of the Central Government of Japan (1901-1945) or the Central Government of Republic of China (1945-1950). There remain gaps in both government consumption in the expenditure accounts and government service output in the production accounts. But these gaps are not adjusted for in our long-run SNA series.

---

<sup>16</sup>) A good study on Taiwanese transport activity was published after our own study and should be taken into account in the future revision of our estimates. See Guo Xing Xie "Railway and Road Transportation in Colonial Taiwan", in Hori, Kazuo and Satoru Nakamura (eds.) Japanese Capitalism and Korea and Taiwan, Kyoto Daigaku Shuppankai, 2004 (in Japanese).

<sup>17</sup>) The division was based on the information shown in the 1939 Census of Commerce. In our extrapolation, we use production indexes of agriculture and manufacturing industry for (1), the index of private consumption expenditure for (2) and indexes of foreign trade for (3).

<sup>18</sup>) See footnote 10.

The amount of data available for period (a) is very limited. We need to extrapolate 1912 estimates using various kinds of data. However, our results are preliminary and to be improved in the near future.<sup>19</sup>

### (3.2) Consolidation to SNA Tables

To begin with, let us describe the principles on which the construction of our long-run SNA data are based. For the sake of international comparability, the editorial board of the COE project formulated two principles regarding the construction of each country's SNA series. The first requirement is to construct the accounts on the basis of the 68SNA. The second is to select 1960 as the reference year for the deflators.

It is fortunate that the official SNA of Taiwan adopts the 68SNA. We can take the nominal series from 1961 to 1990 from the official report of 1996. These can be linked to the series from 1991 to 2000 which is included in the official report published in 2002,<sup>20</sup> In order to link these series to the pre-1960 data, we should take into accounts small gaps between the post-1961 and the pre-1960 series in some items. For example, the coverage of accommodation expenditures in the private consumption data was extended after 1962. Furthermore, the definition of the real estate industry was modified in the 1981 revision of the official SNA report. We made some simple adjustments in these cases, but the effects of these adjustments were generally small.

The official SNA has three kinds of accounts: production, expenditure, and distribution accounts. As was mentioned before, DGBAS seems to adjust to make the statistical discrepancies zero not only in the nominal accounts but also in the real accounts. Because our long-run SNA series are based on the official SNA data for the post-1961 period, we shall take this approach for the overall period.

Nominal production accounts were published for the period 1938-1951 in the semi-official national accounts estimates.<sup>21</sup> The accounts started from the 1951 accounts in the official SNA report. As was noted in Section (3.1), nominal production and expenditure accounts for period (b) were estimated. In our original calculations, there were some statistical discrepancies between these two accounts. But the size of the discrepancies was less than 5% of nominal GDP. Both accounts were adjusted to make the gaps zero. Our 1940 nominal GDP estimates are similar to the

---

<sup>19</sup> ) A detailed explanation will be provided in our final version in Japanese, but the information can be provided on request

<sup>20</sup> ) DGBAS, National Income in Taiwan Area of the Republic of China, 1996, National Accounts for 1951-1995 and National Income in Taiwan Area of the Republic of China, 2002, National Accounts for 1991-2001.

<sup>21</sup> ) See footnote 9.



corresponding figures in the semi-official SNA estimates mentioned above. The long-run nominal series are shown in Table 1.<sup>22</sup>

In the estimates of the real series, especially when the basic series are summed up as aggregated items such as net value added by industry or GDP, we confront the index number problem. It is well known that the growth rate of real GDP differs significantly according to the index formula for the deflators. The problem is serious because our estimates cover long periods. In the estimation of real GDP and its components, basic real series are estimated from quantity data by individual commodity. But in our long-run study, it is difficult to follow this method owing to the scarcity of data. Instead, as the proxy of quantity of a commodity, we calculate the real value index for groups of commodities which can be used as time series for the overall period. Let us call these series the 'basic series' for the aggregation. The basic series are composed of items shown in recent SNA reports but we decompose some item groups into more detailed classifications. For example, in our long-run comparison, agriculture is an important industry, so production is calculated based on relatively small commodity groups. The list of basic series is shown in Table 6.

We take basic series of the 1951-2000 expenditure accounts and the 1961-2000 series of production accounts from official SNA reports and other related data sources. The base years for the deflators were 1991 in the 1996 report and 1996 in the 2002 report. When we linked these two series, the figures of 1991 were used as benchmarks, and at the same time the most detailed industry classification in the report was adopted. Because real series of the production accounts were not published from 1951 to 1961, we estimate them using production indexes for primary and secondary industry, and price deflators for tertiary industry.<sup>23</sup> The major basic series of the production accounts for period (c) can be taken from the semi-official estimates mentioned above, but some supplementary work is required to obtain some of the detailed categories.

The real basic series for period (b) are calculated using 1940 as the base year for both production and expenditure accounts and referring to previous studies. The production series are linked directly to the semi-official estimates. The 1940 expenditure series are linked to the official series which start from 1951 using the deflators calculated by the author. The real series by category are adjusted to make the

---

<sup>22</sup> ) Note that the Taiwanese currency was revalued in 1949. The rate was 1 NT\$(New Taiwan Dollar) = 40000 OT\$ (Old Taiwan \$ or Yuan). In 1945, 1 Japanese Yen was equal to 1 OT\$. In Table 1, data in Yen or OT\$ are converted to NT\$ using these conversion rates.

<sup>23</sup> ) A detailed explanation will be provided in our final publication in Japanese, but the information is available on request.

reference year 1960.<sup>24</sup>

Aggregated items such as GDP are calculated using the basic series. In the case of nominal accounts, we can obtain aggregated items by summing the basic series. In other word, matrix consistency is maintained in the nominal accounts. However, the results are different when using the aggregation formula in the case of real items. There are some alternative methods of aggregation. The simplest one is to sum up basic series as in the nominal accounts. Using this method, the long-run series of real values are calculated in 1960 prices. The constant price evaluation is useful for a short tem comparison. But the constant price evaluation tends to overestimate growth rates in the long-run. To overcome these difficulties, the base years of the SNA deflators have been revised at constant year intervals.

We calculated three real series using alternative approaches: (A) the simple sum of basic series (constant price evaluation), (B) the link of different base years with 5 years intervals, and (C) the Fisher link index method (the base years are revised every year). Note that method (B) is used in the official SNA reports for the post-1961 series, so let us call (B) as “DGBAS method.” These three alternative methods are characterized as follows.

Method	Growth rate of aggregates	Growth rate of Basic series	Matrix Consistency
(A)	Laspeyres bias	Original level	Valid
(B)	Moderate	Modified in revision years	Valid
(C)	Moderate	Original level	Invalid

The estimates of GDP are compared in Table 1. Note that 1960 is the base year for method (A) and the reference year for methods (B) and (C). Method (A) seems to overestimate the growth rate during the period after 1960. This could be explained by the well-known Laspeyres bias. However, the different results obtained using the different methods of aggregation, while not negligible, are not very serious. Further examinations are necessary on these differences but we shall preliminarily adopt series (B) in the next section..

(4) Some Findings from the Consolidated Tables.

The major objective of this paper is to supply data consolidated in the form of the

---

<sup>24</sup> ) Real series by category are adjusted by the ratio of calculated real values and the nominal values in 1960.

68SNA. Real and nominal national accounts data at ten-year intervals are shown in Tables 2 and 3. Annual data are shown in appendix tables. The data can be used in various analyses. For example, the data can be used for growth accounting or for econometric modeling. Such analyses are left for future studies. Here we just provide a simple analysis of the long-term economic growth of Taiwan using the estimated SNA data.

Figure 1 shows the long-run trend in Taiwan's GDP and per capita GDP. To eliminate irregularities, original figures are smoothed using 5-years moving averages. In the 1940s, growth rates fluctuate wildly owing to the economic dislocation brought on by WWII. The impact of population increases was remarkable in the mid-1940s owing to the migration from mainland China. As is well known, the Taiwanese economy has grown steadily since the end of WWII. Growth accelerated after the 1960s and remained high until 1980 except for the blip due to the oil crisis. It should also be noted that the economy registered sustained growth before WWII, expanding at an average rate of more than 3%. Similarly, per capita GDP also increased steadily before 1940. What is more, these growth rates for the pre-WWII period were high by international standards.

Economic growth was supported by changes in industrial structure and the composition of foreign trade. The growth of manufacturing industry played an important role in the economic development of Taiwan as is shown in Table 3.B. The structure of manufacturing industry has changed as is shown in Table 4. The ratio of foreign trade to GDP was high before WWII, sharply declined in the 1940s and 1950s, but then rose again. In the 1980s, the sum of the export and import ratios exceeded 100% of GDP (see Figure 2).

The tables and figures allow us to gain an overview of Taiwan's economic record. Table 2 shows the changes over time in the composition of nominal GDP. Prior to WWII, primary industry, consisting mainly of agriculture, occupied a large share. The productivity of Taiwanese agriculture was high. Two agricultural products (rice and sugar cane) occupied large shares in this sector. Primary industry retained a relatively important position in GDP until the 1980s. This is in contrast with the case of Japan and South Korea where the role of primary industry declined significantly in the post-WWII period. Manufacturing industry accounted for a relatively high share (about 25%) of GDP before WWII. But the sugar industry occupied a major share in manufacturing production, so other manufacturing industries were still not very developed. Table 4 indicates these changes by ISIC category.<sup>25</sup> The composition of

---

<sup>25</sup> ) Yasuhiro Hara reclassified the pre-WWII production data by the Government General of Taiwan by the ISIC. Table 4 is based on his unpublished results.

foreign trade reflects the industrial structure. Table 5 shows that the major export goods were rice and sugar (included in food and animals), while consumer goods accounted for a large share of imports.<sup>26</sup>

Secondary industry, consisting mainly of manufacturing, increased its share after WWII. In the 1950s and 1960s, light industries such as textiles and related products saw an increase in their share in total industrial production. Imports of textile raw materials (included in chemical and related goods) increased. Production gradually shifted from import substitution to export orientation.

In the next phase, during the 1970s and 1980s, the structure of manufacturing industry changed again, with the emphasis shifting from light industry to machinery. The chemical industry developed enough to supply raw materials for the textile sector. The machinery industries became established and began to export their products. These facts are observed in the rise of the export shares of machinery and transport equipment and manufactured goods classified by materials. The import of capital goods increased significantly in line with these developments.

Tertiary industry played an important role after the 1980s. The share of the finance and insurance industry and the service industry in GDP increased. The transportation and communication industry occupied a relatively stable share in GDP during the entire century, while the structure of industry changed significantly in this period.<sup>27</sup>

The analysis in this section is just a very simple one, but as shown in the appendix of this paper, our database provides annual figures for a range of national accounts statistics that can serve as the basis for more substantial research. This volume provides some research, but it is our hope that researchers will use our results for more systematic studies.

---

<sup>26</sup> ) In 1900, 1910 and 1920, the export share of 'chemical and related products' was high. We should note that most of these goods consisted of traditional goods such as Chinese medicine.

<sup>27</sup> ) It is very difficult to calculate the growth rate of the communication industry because the rate of technical change in the communication sector is so rapid. In Taiwan, studies on production indexes suggest that the growth rate of this industry has been underestimated in the official SNA statistics. But more studies are required to correct the official series.

Appendix Contents of Final Publication (in Japanese)

Long-run Economic Statistical Database of Taiwan (title may be changed)

Edited by Toshiyuki Mizoguchi

Authors: Konosuke Odata, Osamu Saito, Tadayoshi Taniguchi, Noriyuki Nojima,  
Masahiro Sato, Hiroshi Ikegami, I-Ling Liu, Yasuhiro Hara

Preface (Objective of this Volume: Examples of Quantitative Analysis)

Chapter 1 Characteristics of Taiwanese Statistics and Development of Statistical  
System

Chapter 2 Population Statistics

Chapter 3 Labor Statistics

Chapter 4 Production Statistics of Agriculture, Forestry and Fishery Industries

Chapter 5 Production Statistics of Secondary Industry

Chapter 6 Production Statistics of Tertiary Industry

Chapter 7 Financial and Price Statistics

Chapter 8 Statistics on Private Consumption and Capital Formation

Chapter 9 Foreign Trade Statistics

Chapter 10 SNA Statistics

CDR (Appendix) Basic data and copies of previous contributions referred to in this  
volume.

Table 1 Long-run Estimates of GDP

	Nominal GDP	Real GDP by Aggregation Method		
		A	C	B
		Simple Sum	Fisher Link Indexes	DGBAS method
	Million NT\$	Million NT\$ (1960 Prices)		
1901	0.00248	6,883		7,608
1902	0.00291	7,638		7,787
1903	0.00326	9,180		9,309
1904	0.00305	8,884		9,010
1905	0.00278	7,441		7,607
1906	0.00313	8,211		8,020
1907	0.00366	9,153		9,199
1908	0.00370	9,378		9,401
1909	0.00432	10,547		10,692
1910	0.00553	10,832		11,351
1911	0.00547	9,891		10,257
1912	0.00577	10,196	8,689	10,585
1913	0.00588	10,962	8,772	11,101
1914	0.00548	10,978	8,950	11,139
1915	0.00599	10,902	9,138	11,388
1916	0.00710	11,708	10,122	12,336
1917	0.00887	12,555	10,445	13,762
1918	0.01104	12,036	9,739	13,553
1919	0.01449	12,967	9,900	13,597
1920	0.01552	13,459	10,324	13,980
1921	0.01326	14,200	10,791	14,860
1922	0.01286	15,240	11,874	16,266
1923	0.01377	15,459	12,231	17,193
1924	0.01573	16,579	13,081	18,331
1925	0.01720	18,120	14,232	19,414
1926	0.01695	19,292	14,685	20,221
1927	0.01624	19,364	14,721	20,096
1928	0.01787	20,106	15,831	20,424
1929	0.01837	21,680	17,166	21,946
1930	0.01652	22,722	17,527	22,778
1931	0.01437	22,274	17,566	23,335
1932	0.01666	23,393	18,313	24,066
1933	0.01664	23,434	18,820	24,075
1934	0.01850	23,932	19,641	24,939
1935	0.02181	26,821	22,012	27,559
1936	0.02364	28,163	23,135	28,877
1937	0.02526	28,297	23,819	29,026
1938	0.02903	29,391	25,497	30,173
1939	0.03398	28,805	25,222	29,492
1940	0.03545	27,870	24,283	28,417
1941	0.03814	28,241	25,211	27,294
1942	0.04143	28,566	28,375	28,630
1943	0.04707	22,271	22,261	26,526
1944	0.05988	14,742	15,174	22,362
1945	0.10391	8,505	10,154	11,945
1946	1.20553	19,236	18,985	12,626
1947	5.21945	19,104	18,558	15,475
1948	44.78049	23,437	23,397	20,045
1949	3013	26,431	23,942	24,166
1950	7659	30,785	29,115	29,321

	Nominal GDP	Real GDP by Aggregation Method		
		A	C	B
		Simple Sum	Fisher Link Indexes	DGBAS method
	Million NT\$	Million NT\$ (1960 Prices)		
1951	12,457	33,140	30,522	31,669
1952	17,430	37,027	36,829	35,462
1953	23,206	40,770	40,308	38,771
1954	25,476	43,663	42,843	42,470
1955	30,288	47,608	45,698	45,912
1956	34,768	48,787	47,505	48,439
1957	40,610	53,332	51,889	52,004
1958	45,447	58,588	56,367	55,494
1959	52,374	60,153	58,411	59,740
1960	63,111	63,111	63,111	63,111
1961	70,269	66,957	67,456	67,452
1962	77,423	71,611	71,710	72,783
1963	87,553	78,086	78,332	79,591
1964	102,294	89,921	91,426	89,301
1965	112,975	102,258	104,281	99,244
1966	126,403	112,492	110,594	108,089
1967	146,249	126,268	126,871	119,667
1968	170,408	139,376	142,766	130,642
1969	197,440	153,056	158,410	142,333
1970	227,496	172,462	181,002	158,517
1971	264,474	197,502	203,901	178,958
1972	317,104	225,816	231,231	202,790
1973	411,524	258,052	266,230	228,814
1974	551,152	266,877	282,647	231,472
1975	591,369	271,108	267,343	242,880
1976	709,657	313,471	318,746	276,545
1977	831,250	342,349	344,486	304,724
1978	994,159	398,870	391,786	346,148
1979	1,198,898	428,734	431,269	374,442
1980	1,495,036	459,352	448,581	401,781
1981	1,773,931	488,554	467,304	426,542
1982	1,899,971	498,484	470,264	441,689
1983	2,100,005	552,195	522,315	478,998
1984	2,343,078	611,192	578,642	529,770
1985	2,473,786	630,164	594,760	556,007
1986	2,855,180	723,180	692,387	620,736
1987	3,237,051	830,592	816,868	699,826
1988	3,523,193	890,048	897,515	754,697
1989	3,938,826	960,714	965,651	816,833
1990	4,307,043	986,780	1,004,678	860,891
1991	4,810,705	1,052,040	1,091,839	925,929
1992	5,338,952	1,139,576	1,194,264	995,257
1993	5,918,376	1,218,294	1,282,578	1,065,063
1994	6,463,600	1,314,991	1,356,689	1,140,768
1995	7,017,933	1,410,731	1,425,013	1,214,051
1996	7,678,126	1,498,354	1,516,571	1,288,135
1997	8,328,780	1,636,591	1,651,267	1,374,142
1998	8,938,967	1,721,976	1,728,122	1,436,946
1999	9,289,929	1,889,216	1,828,542	1,514,885
2000	9,663,388	2,017,986	1,857,040	1,603,633

Table 2 Nominal Accounts of SNA

	GDE (million NT\$)	Composition of Expenditure Accounts(%)						Adjustment item
		Private consumption	Government consumption	Capital formation	Increase in stocks	Exports	Imports	
1905	0.00278	94	6	4	0	22	22	-3
1910	0.00553	81	7	8	0	26	21	0
1920	0.01552	73	5	20	0	33	27	-5
1930	0.01652	75	8	11	0	35	25	-4
1940	0.03545	82	7	9	0	39	33	-4
1950	7659	64	24	18	0	9	14	0
1960	63111	68	19	16	4	11	19	0
1970	227496	56	18	22	4	30	30	0
1980	1495036	51	16	31	3	53	54	0
1990	4307043	55	17	22	1	47	42	0
2000	9663388	62	13	23	-1	54	52	0

	GDP (million NT\$)	Composition of Production Accounts (%)				
		Primary industry	Secondary industry	Tertiary industry	Government services	Adjustment item
1905	0.00278	42	17	38	4	-1
1910	0.00553	38	24	35	4	-1
1920	0.01552	35	24	45	4	-8
1930	0.01652	39	22	39	5	-5
1940	0.03545	36	26	38	4	-3
1950	7659	35	18	33	12	2
1960	63111	28	27	32	11	1
1970	227496	15	37	34	12	2
1980	1495036	8	46	36	10	0
1990	4307043	4	41	45	12	-2
2000	9663388	2	32	58	11	-4

	GDP Shares of Major Industries (%)							
	Agriculture	Manufactur- ing	Energy supply	Construction	Wholesale & Retail Sale	Transportation Communication	Finance and real estate	Services
1905	41	14	0	1	15	4	9	9
1910	37	21	0	2	14	4	9	8
1920	32	16	1	7	14	5	18	9
1930	35	15	1	4	14	5	14	7
1940	32	17	2	3	12	5	16	5
1950	31	13	1	3	13	4	10	6
1960	25	19	2	4	15	5	9	4
1970	13	29	2	4	14	6	10	4
1980	6	36	3	6	13	6	12	5
1990	3	33	3	5	14	6	17	8
2000	2	26	2	3	19	7	20	12

Table 3 Real Accounts of SNA  
(A.) Real Values (Millions NT\$ in 1960 Prices)

(A.1)	GDE	Composition of Expenditure Accounts						
		Private consumption	Government consumption	Capital formation	Increase in stocks	Exports	Imports	Adjustment item
1905	7,607	7,653	168	318	0	912	1,250	-194
1910	11,351	10,361	328	965	0	2,065	2,353	-14
1920	13,980	12,792	310	2,290	0	3,174	3,882	-703
1930	22,778	19,371	378	2,598	0	8,200	6,614	-1,156
1940	28,417	22,221	547	3,127	0	12,181	8,712	-947
1950	29,321	21,247	5,288	3,488		1,923	2,625	0
1960	63,111	43,229	11,992	10,327	2,250	7,168	11,855	0
1970	158,517	90,008	22,136	44,728	7,077	48,842	54,275	0
1980	401,781	189,955	36,732	141,779	13,834	200,083	180,602	0
1990	860,891	433,662	74,687	275,041	9,093	541,772	473,364	0
2000	1,603,633	791,522	86,888	633,249	-42,026	1,211,963	1,077,963	0

(Note) The increases in stocks are included other expenditure items from 1905 to 1950.

(A.2)	GDP	Composition of Production Accounts				
		Primary industry	Secondary industry	Tertiary industry	Government services	Adjustment item
1905	7,607	3,602	787	3,150	67	-88
1910	11,351	4,427	1,817	4,973	134	-159
1920	13,980	6,151	2,355	6,331	132	-988
1930	22,778	10,489	4,266	8,886	186	-1,048
1940	28,417	11,248	6,577	10,963	360	-731
1950	29,321	12,170	4,614	9,228	2,711	598
1960	63,111	17,898	16,852	20,432	7,065	864
1970	158,517	30,106	60,719	50,268	13,045	4,379
1980	401,781	30,696	211,247	134,686	22,403	2,750
1990	860,891	33,022	444,424	339,059	41,820	2,565
2000	1,603,633	27,962	842,047	719,148	59,741	-45,265

(A.3)	Production of Major Industries (Net Value Added)							
	Agriculture	Manufacturing	Energy supply	Construction	Wholesale & retail sale	Transportation & communication	Finance and real estate	Services
1905	3,075	503		93	1,312	87	772	979
1910	3,537	1,307		247	2,271	167	1,123	1,413
1920	3,868	1,246	11	655	2,628	279	2,128	1,296
1930	6,093	2,849	38	731	4,095	390	2,829	1,572
1940	6,431	4,112	196	1,044	3,922	728	4,333	1,980
1950	11,042	2,956	298	889	3,564	636	2,831	2,197
1960	15,647	11,965	1,041	2,439	9,625	2,951	5,411	2,445
1970	22,986	48,845	3,692	5,946	21,632	9,285	15,597	3,754
1980	23,790	173,389	11,457	23,632	45,011	26,722	52,518	10,435
1990	27,493	379,723	26,186	36,077	108,527	53,500	148,911	28,122
2000	23,436	752,638	42,750	44,611	230,902	124,708	302,874	60,664



## (B) Annual Growth Rates

(B1)	GDE	Composition of Expenditure Accounts				
		Private consumption	Government consumption	Capital formation	Exports	Imports
1905-10	8.3	6.2	14.3	2.1	17.7	13.5
1910-20	2.1	2.1	-0.6	2.1	4.4	5.1
1920-30	5.0	4.2	2.0	2.1	10.0	5.5
1930-40	2.2	1.4	3.8	2.1	4.0	2.8
1940-50	0.3	-0.4	25.5	2.1	-16.9	-11.3
1950-60	8.0	7.4	8.5	2.1	14.1	16.3
1960-70	9.6	7.6	6.3	2.1	21.2	16.4
1970-80	9.7	7.8	5.2	2.1	15.1	12.8
1980-90	7.9	8.6	7.4	2.1	10.5	10.1
1990-00	6.4	6.2	1.5	2.1	8.4	8.6

(Note) The increase in stocks is added to the capital formation.

(B2)	GDP	Composition of Production Accounts			
		Primary industry	Secondary industry	Tertiary industry	Government services
1905-10	8.3	4.2	18.2	9.6	14.8
1910-20	2.1	3.3	2.6	2.4	-0.2
1920-30	5.0	5.5	6.1	3.4	3.5
1930-40	2.2	0.7	4.4	2.1	6.8
1940-50	0.3	0.8	-3.5	-1.7	22.4
1950-60	8.0	3.9	13.8	8.3	10.1
1960-70	9.6	5.3	13.7	9.4	6.3
1970-80	9.7	0.2	13.3	10.4	5.6
1980-90	7.9	0.7	7.7	9.7	6.4
1990-00	6.4	-1.6	6.6	7.8	3.6

(B.3)	Production of Major Industries (Net Value Added)							
	Agriculture	Manufacturing	Energy supply	Construction	Wholesale & retail sale	Transportation and communication	Finance and real estate	Services
1905-10	2.8	21.1		21.6	11.6	13.8	7.8	7.6
1910-20	0.9	-0.5		10.2	1.5	5.3	6.6	-0.9
1920-30	4.6	8.6	13.0	1.1	4.5	3.4	2.9	1.9
1930-40	0.5	3.7	17.8	3.6	-0.4	6.4	4.4	2.3
1940-50	5.6	-3.2	4.3	-1.6	-1.0	-1.3	-4.2	1.0
1950-60	3.5	15.0	13.3	10.6	10.4	16.6	6.7	1.1
1960-70	3.9	15.1	13.5	9.3	8.4	12.1	11.2	4.4
1970-80	0.3	13.5	12.0	14.8	7.6	11.1	12.9	10.8
1980-90	1.5	8.2	8.6	4.3	9.2	7.2	11.0	10.4
1990-00	-1.6	7.1	5.0	2.1	7.8	8.8	7.4	8.0

Table 4 Nominal Value Added of Manufacturing Production

	Nominal manufacturing production Million NT\$	Composition of Manufacturing Production (%)								
		Food	Tobacco	Textile mill products	Wearing apparel & accessories	Leather & fur products	Pulp, paper & paper products	Printing & processing	Wooden products & furniture	Petroleum & coal products
1912	0.0006316	63.34	1.76	0.35	3.38	0.66	1.67	0.27	3.06	0.00
1920	0.0023045	70.61	1.63	0.30	0.58	0.78	1.08	0.20	3.25	0.00
1930	0.0024318	69.42	1.46	0.42	1.60	0.88	1.28	0.35	6.40	0.00
1940	0.0058655	59.45	2.55	1.14	1.67	1.20	2.15	0.38	7.04	0.00
1950	1,041	52.68	5.77	7.31	0.90	0.16	1.23	0.53	5.25	2.45
1960	11,925	32.31	9.20	11.92	2.71	0.28	5.04	2.17	4.26	4.51
1970	66,168	17.88	5.09	11.48	4.38	0.37	3.02	1.30	4.30	10.72
1980	537,089	9.60	2.73	9.29	5.46	1.65	3.22	1.39	2.92	6.81
1990	1,434,545	8.57	1.67	6.70	4.15	1.29	2.59	1.41	2.67	4.66
2000	2,550,380	4.70	1.06	5.41	1.80	0.46	2.08	0.80	1.40	6.79

	Composition of Manufacturing Production (%)									
	Chemical matter & rubber prod.	Plastic products	Non-metallic mineral products	Basic mineral products	Fabricated metal products	Machinery, equipment and repairing				Miscellaneous
						General	Electrical & electronic	Transport	Precision	
1912	16.13	0.00	5.76	0.93	0.64	0.81	0.00	0.09	0.29	0.87
1920	9.97	0.00	6.45	1.27	0.49	1.76	0.00	0.74	0.14	0.77
1930	6.74	0.00	5.90	1.02	0.68	2.63	0.00	0.31	0.18	0.73
1940	7.68	0.00	5.07	2.91	3.37	4.37	0.00	0.37	0.39	0.27
1950	10.17	1.12	3.13	0.46	0.88	1.28	0.32	0.87	0.63	4.87
1960	5.54	1.02	7.15	4.39	1.46	1.70	1.84	3.23	0.21	1.06
1970	10.79	0.86	4.71	2.89	2.03	2.83	9.48	4.39	0.58	2.88
1980	12.88	1.38	4.58	6.49	3.90	2.89	12.02	5.90	1.15	5.75
1990	8.38	7.91	4.42	6.86	5.94	4.46	15.93	7.50	1.12	3.78
2000	8.72	5.67	2.75	7.38	7.40	5.74	28.19	6.62	0.90	2.14

Table 5 (A) Composition of Foreign Trade: Exports (SITC)

(%)

	Food and animals	Beverages and tobacco	Crude materials, inedible, except fuels	Mineral fuels, lubricants and related materials	Animal and vegetable oils and fats	Chemicals and related products	Manufactured goods classified chiefly by material	Machinery and transport equipment	Miscellaneous manufactured articles
1900	68.31	0.05	5.04	0.73	0.00	23.14	0.26	0.00	0.53
1910	83.08	0.01	2.82	0.11	0.01	11.40	1.79	0.03	0.52
1920	79.80	0.10	1.66	4.84	0.06	9.05	2.73	0.05	0.88
1930	86.95	0.02	3.60	1.52	0.02	3.81	2.34	0.08	0.90
1940	72.35	0.40	7.38	2.09	0.28	6.26	8.20	0.40	2.56
1950	87.67	0.00	5.05	0.47	0.00	4.99	0.68	0.09	1.06
1960	63.89	0.24	5.52	1.53	0.07	5.05	19.86	0.78	3.03
1970	18.38	0.17	3.99	0.65	0.02	2.35	29.36	16.67	28.08
1980	8.55	0.07	1.69	1.45	0.02	2.58	22.88	23.57	39.19
1990	3.98	0.03	1.75	0.03	0.03	4.08	19.55	38.13	32.29
2000	1.17	0.03	1.26	1.12	0.02	6.24	19.45	58.39	12.13

Table 5 (B) Composition of Foreign Trade: Imports (SITC)

(%)

	Food and animals	Beverages and tobacco	Crude materials, inedible, except fuels	Mineral fuels, lubricants and related materials	Animal and vegetable oils and fats	Chemicals and related products	Manufactured goods classified chiefly by material	Machinery and transport equipment	Miscellaneous manufactured articles
1900	17.02	7.21	10.69	5.65	1.12	18.01	22.82	2.02	14.55
1910	16.82	5.52	8.82	2.63	0.22	13.92	29.66	13.33	8.51
1920	30.33	5.05	9.27	2.67	0.52	13.59	25.13	7.48	5.60
1930	23.34	5.29	8.40	3.09	0.77	14.20	30.33	7.10	7.22
1940	22.55	3.81	13.73	2.92	0.49	14.20	25.85	8.87	7.49
1950	23.78	0.62	4.34	2.68	2.54	14.66	29.90	17.79	3.43
1960	14.09	0.91	16.98	7.57	1.61	15.26	12.40	27.13	3.82
1970	8.46	0.89	20.39	4.45	0.36	10.09	16.36	35.14	3.39
1980	6.12	0.52	13.44	25.47	0.24	9.72	12.45	27.49	3.66
1990	4.59	0.56	8.05	8.70	0.18	13.20	16.18	37.98	5.67
2000	2.44	0.63	3.70	9.31	0.11	11.13	11.10	50.18	9.71

Source: Nojima (1999).

Table 6 List of Basic Series for Real Series Aggregation

High level aggregates	Low level aggregates	Basic series	
GDP (Production accounts)			
Primary industry	Agriculture	Rice	
		Other cereals	
		Sugar canes	
		Other commercial crops	
		Vegetables	
		Fruits	
	Livestock		
	Forestry	Forestry	
	Fishery	Fishery	
Secondary industry	Manufacturing	19 industries in Table 4	
	Mining	Coal	
		Other mining products	
	Energy supply	Electricity	
		Other energy supply	
Construction	Residential construction		
	Other construction		
Tertiary industry	Transport and communication	Railway transport	
		Other land transport	
		Water transport	
		Air transport	
		Communication	
	Wholesale and retail trade	Wholesale domestic trade	
		Retail trade	
		Foreign trade	
		Restaurant and hotel	
	Finance, insurance and real estate	Banks	
		Other financial institutions	
		Brokerage	
		Dwellings	
	Service	Service for business	
		Service for households	
	Government & other producers	Government	Central government
			Local governments
		Other producers	Other producers
	GDE (expenditure accounts)		
Private consumption	Household consumption	Food	
		Beverages	
		Tobacco	
		Clothing and footwear	
		Fuel and power	
		Rent and water charges	
		Furniture, furnishing & equipments	
		Household operation	
		Medical & health care	
		Recreation & education	
		Transport & communication	
		Other goods and services	
		Other consumption	Consumption of nonprofit institutions
	Government consumption		Compensation of employees
		Consumption of fixed capital	
		Intermediate consumption	
Capital formation	Fixed capital formation	Construction	
		Machinery and equipment	
	Increase in stocks	Increase in stocks	
Foreign trade	Exports of goods	9 items shown in Table 5	
	Imports of goods	9 items shown in Table 5	
	Service trade	Service trade	

Figure 1 Growth Rates of GDP and Per Capita GDP

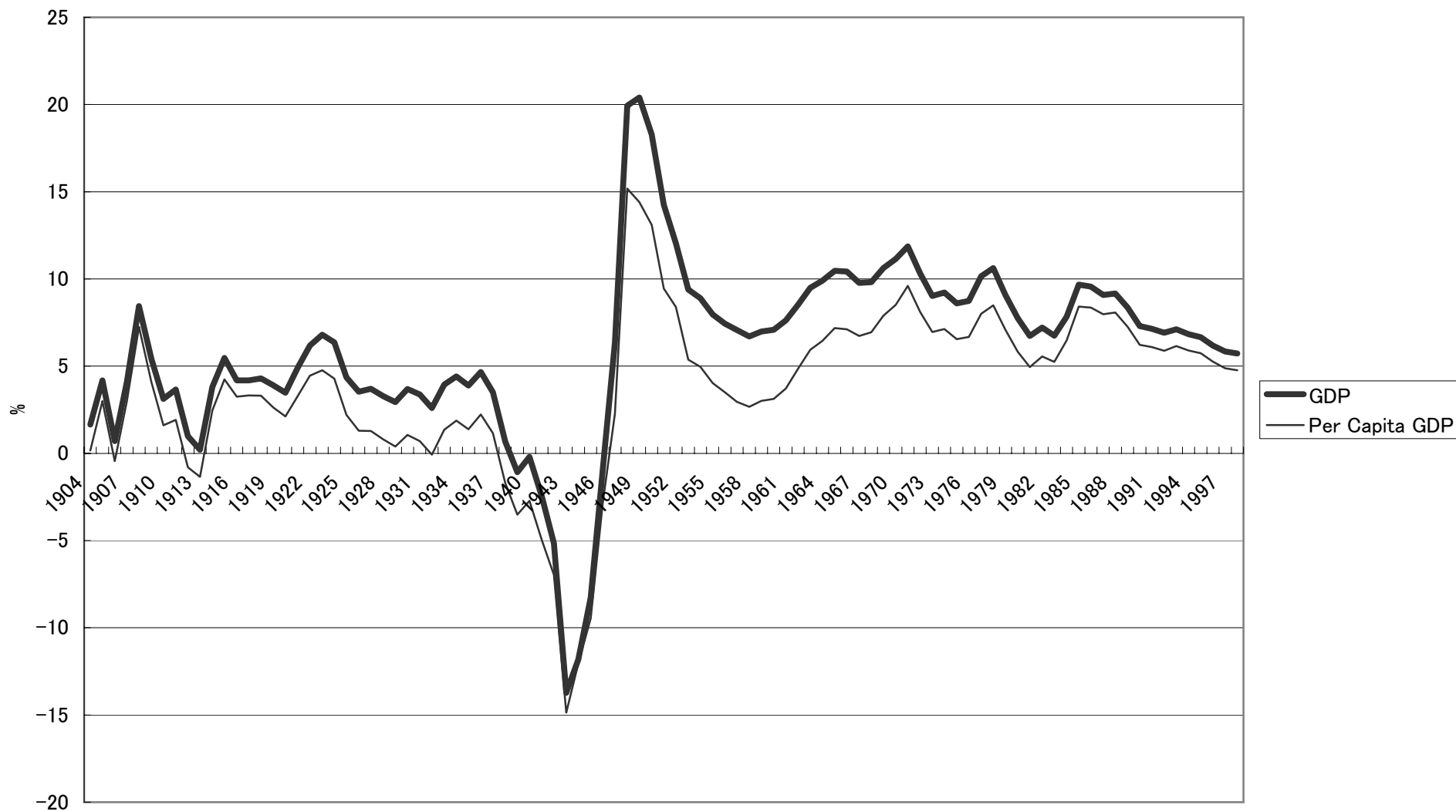
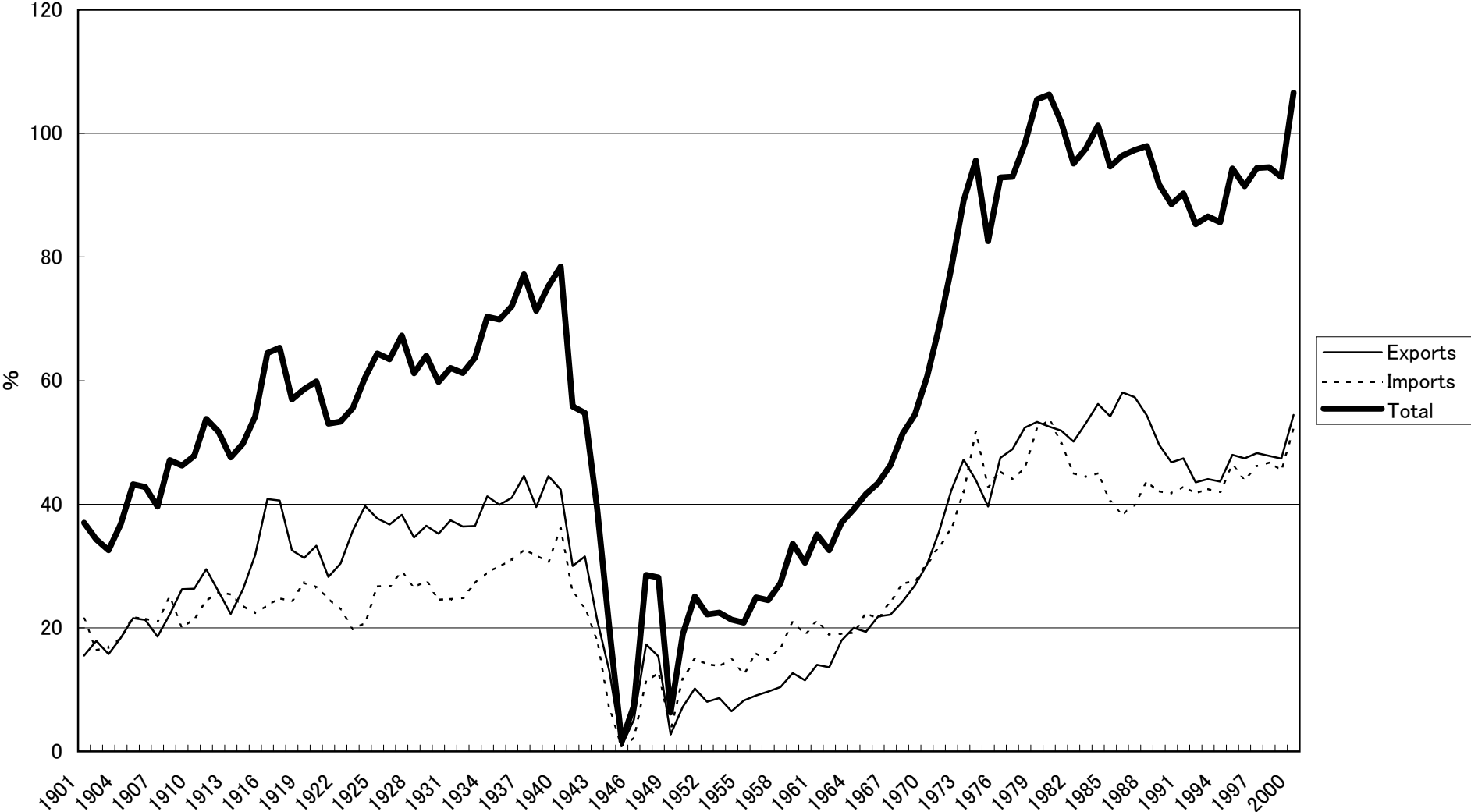


Figure 2 Share of the foreign trade in GDP



Appendix Table 1 Nominal National Accounts

(A)	GDE	Private Consumption Expenditure	Government Consumption Expenditure	Gross Capital Formation	Inventory	Export	Import	Service Trade
	1901-1948: NT\$							
1901	2477	2303	215	139	0	382	529	-47
1902	2911	2533	264	105	0	518	474	-51
1903	3262	2980	264	102	0	510	544	-69
1904	3048	2789	215	106	0	556	557	-78
1905	2777	2601	160	114	0	598	602	-94
1906	3129	2910	169	123	0	666	672	-66
1907	3659	3368	192	310	0	680	770	-122
1908	3702	3247	208	436	0	821	925	-85
1909	4318	3676	214	277	0	1133	864	-118
1910	5527	4471	368	428	0	1455	1188	-7
1911	5472	4439	404	500	0	1614	1330	-155
1912	5766	5146	335	471	0	1492	1491	-188
1913	5876	5537	357	395	0	1307	1490	-230
1914	5478	4890	399	301	0	1435	1293	-254
1915	5985	5046	332	304	0	1902	1342	-256
1916	7098	5385	352	427	0	2898	1677	-287
1917	8874	6630	352	895	0	3601	2195	-408
1918	11043	8721	477	1388	0	3596	2694	-445
1919	14492	12033	605	1738	0	4539	3955	-468
1920	15521	11377	787	3060	0	5166	4124	-746
1921	13258	10157	798	2202	0	3742	3288	-353
1922	12858	9699	1045	1392	0	3912	2951	-238
1923	13773	9786	1087	1395	0	4925	2731	-689
1924	15735	11677	1037	1197	0	6245	3275	-1147
1925	17201	13725	1047	1548	0	6485	4592	-1013
1926	16954	13805	1080	1508	0	6221	4540	-1121
1927	16240	12837	1155	1815	0	6216	4710	-1073
1928	17873	14039	1202	2182	0	6189	4750	-989
1929	18373	14050	1268	2348	0	6708	5055	-945
1930	16523	12313	1291	1863	0	5822	4058	-709
1931	14373	10280	1261	1585	0	5373	3542	-584
1932	16655	12574	1288	1873	0	6059	4140	-999
1933	16638	12207	1282	2045	0	6069	4529	-435
1934	18501	13154	1357	2411	0	7638	5369	-692
1935	21815	15760	1407	3051	0	8708	6532	-578
1936	23642	17210	1464	2985	0	9705	7322	-400
1937	25259	17804	1868	3147	0	11261	8240	-581
1938	29027	20456	2036	3835	0	11476	9218	442
1939	33981	25075	2299	3180	0	15143	10437	-1279
1940	35447	28982	2506	3177	0	13906	11837	-1287
1941	38139	29600	2925	3889	0	12350	10625	0
1942	41434	27093	3450	7440	0	13075	9625	0
1943	47072	31912	4325	9284	0	10025	8475	0
1944	59881	36966	5250	14014	0	7775	4125	0
1945	103906	78472	6925	18434	0	900	825	0
1946	1205531	1003679	78475	88452	0	62050	27125	0
1947	5219448	3971612	286967	644694	0	903600	587425	0
1948	44780487	37446412	1618511	4746689	0	5656700	4687825	0

	GDE	Private Consumption Expenditure	Government Consumption Expenditure	Gross Capital Formation	Inventory	Export	Import
1949-2000: 1000000NT\$							
1949	3013	2532	113	391	0	83	106
1950	7659	4893	1822	1354	0	653	1063
1951	12457	9064	2195	1325	450	1254	1832
1952	17430	12920	2925	1935	701	1382	2432
1953	23206	17623	3552	2669	544	1977	3159
1954	25476	18957	4591	3326	702	1629	3729
1955	30288	21956	5637	3390	595	2467	3758
1956	34768	24625	6988	4576	930	3100	5452
1957	40610	28251	8074	5266	1068	3876	5925
1958	45447	31563	9308	6742	691	4673	7530
1959	52374	36235	10707	8565	1133	6550	10816
1960	63111	43229	11992	10327	2250	7168	11855
1961	70269	47695	13528	11386	2643	9835	14816
1962	77423	52281	15493	11663	2117	10534	14665
1963	87553	56105	16446	13381	2624	15691	16693
1964	102294	64522	17844	14920	4231	20437	19659
1965	112975	71673	19061	19149	6476	21838	25222
1966	126403	77299	21937	24104	2713	27605	27255
1967	146249	87666	25589	30111	5877	32382	35375
1968	170408	102091	30413	37430	5321	41390	46237
1969	197440	114205	36298	43696	4669	53069	54497
1970	227496	128025	41523	49203	8859	68955	69070
1971	264474	142962	45616	61467	7921	94060	87552
1972	317104	165065	50917	75199	6122	134004	114203
1973	411524	207483	62519	102580	17119	194283	172460
1974	551152	300204	77711	157161	58781	242087	284792
1975	591369	337828	93335	183846	-4277	234382	253744
1976	709657	369704	107823	196263	20563	337153	321849
1977	831250	427963	129177	213168	20415	406637	366111
1978	994159	498932	150714	256256	24136	520711	456591
1979	1198898	606020	184939	336776	57610	639218	625664
1980	1495036	769790	237793	457663	47592	785361	803162
1981	1773931	922154	285727	494043	35790	920920	884703
1982	1899971	1002305	320645	490923	-11699	952471	854674
1983	2100005	1085429	340290	478430	14431	1114298	932873
1984	2343078	1189459	371818	496281	23090	1317482	1055052
1985	2473786	1261580	399364	466341	5018	1341253	999770
1986	2855180	1366466	422882	517461	-16805	1658744	1093568
1987	3237051	1542478	466196	622598	44336	1855409	1293966
1988	3523193	1781435	529866	733689	100236	1914488	1536521
1989	3938826	2103665	616423	869564	53859	1953257	1657942
1990	4307043	2358684	739605	965580	28539	2013953	1799318
1991	4810705	2635459	836780	1066604	53815	2280505	2062458
1992	5338952	2987919	893352	1288580	73831	2324857	2229587
1993	5918376	3347747	924790	1489590	60018	2608915	2512684
1994	6463600	3773534	941500	1588779	51840	2821162	2713215
1995	7017933	4124738	999083	1750642	26854	3366997	3250381
1996	7678126	4539920	1097699	1727366	54009	3640089	3380957
1997	8328780	4936084	1197631	1895357	121089	4019880	3841261
1998	8938967	5334143	1279698	2103919	122572	4274219	4175584
1999	9289929	5641313	1221717	2124744	130621	4402101	4230567
2000	9663388	5981274	1246983	2267328	-54978	5260994	5038213



(B)	Production Accounts							
	GDP	Industry Total	Primary	Secondary	Tertiary	Government Etc.	Adjustment items	Industry Agriculture
	1901-1948: NT\$							
1901						120		
1902						134		
1903						138		
1904						102		
1905	2777	2701	1171	478	1053	107	-31	1133
1906	3129	3054	1297	502	1255	117	-42	1255
1907	3659	3585	1652	553	1380	123	-50	1610
1908	3702	3619	1496	743	1381	138	-55	1452
1909	4318	4249	1522	1101	1626	145	-76	1476
1910	5527	5413	2127	1353	1932	194	-80	2062
1911	5472	5357	2181	1279	1897	212	-97	2121
1912	5766	5662	2383	931	2347	233	-129	2322
1913	5876	5815	2498	880	2437	230	-169	2413
1914	5478	5414	2058	1115	2242	235	-171	1935
1915	5985	6058	1965	1690	2402	226	-299	1759
1916	7098	7304	2197	2422	2684	226	-431	1996
1917	8874	9542	3321	2364	3856	247	-915	3030
1918	11043	12134	4244	2998	4892	260	-1352	3900
1919	14492	15477	5592	3844	6040	296	-1281	5200
1920	15521	16198	5358	3790	7050	556	-1233	4892
1921	13258	13984	4879	2591	6513	582	-1309	4427
1922	12858	13708	4505	2758	6444	595	-1444	4035
1923	13773	14915	4726	3352	6837	636	-1778	4171
1924	15735	17058	6141	3282	7635	611	-1935	5552
1925	17201	18364	7389	3231	7743	637	-1800	6758
1926	16954	17934	7001	3051	7882	647	-1628	6369
1927	16240	16917	6489	3298	7130	656	-1333	5810
1928	17873	18025	7092	3850	7083	691	-844	6347
1929	18373	18465	7360	4237	6868	727	-819	6602
1930	16523	16601	6437	3700	6464	777	-855	5799
1931	14373	14523	5213	3439	5870	759	-908	4685
1932	16655	16795	6587	3950	6258	748	-888	6066
1933	16638	16713	5849	4431	6433	779	-854	5268
1934	18501	18561	7004	4867	6691	787	-848	6373
1935	21815	21829	8631	5628	7571	830	-844	7936
1936	23642	23698	9249	6245	8204	856	-912	8459
1937	25259	25050	9115	6325	9610	953	-744	8397
1938	29027	28683	10455	7747	10481	1069	-725	9786
1939	33981	33552	12318	9359	11876	1126	-697	11395
1940	35447	35199	12608	9279	13312	1272	-1025	11342
1941	38139	37578	13343	10416	13819	1425	-864	11851
1942	41434	40712	14676	10987	15049	1625	-903	12936
1943	47072	45886	15035	14022	16828	1975	-789	12489
1944	59881	58580	17563	19084	21933	2301	-1000	15495
1945	103906	102554	27726	24223	50605	2902	-1550	16101
1946	1205531	1153331	869726	122007	161597	65950	-13750	793307
1947	5219448	5027648	3331367	831357	864924	258200	-66400	2789138
1948	44780487	44311162	28819826	6941593	8549743	1434575	-965250	26295460

(B)	Production Accounts							
	GDP	Industry Total	Primary	Secondary	Tertiary	Govern't Etc.	Adustment items	Industry Agriculture
	1949-2000: 1000000NT\$							
1949	3013	2962	1515	576	872	97	-46	1363
1950	7659	6613	2649	1401	2563	913	133	2383
1951	12457	10757	3989	2636	4133	1414	286	3589
1952	17430	15204	5574	3406	6225	1772	454	5059
1953	23206	20622	7936	4467	8219	2187	396	7335
1954	25476	21882	7087	6049	8747	2784	810	6322
1955	30288	26009	8747	6988	10274	3518	761	7790
1956	34768	30016	9476	8428	12111	3941	812	8434
1957	40610	35370	11014	10181	14175	4282	958	9648
1958	45447	39216	12076	11201	15940	5084	1147	10429
1959	52374	45517	13705	14094	17717	5918	939	11766
1960	63111	55181	17898	16852	20432	7066	864	15647
1961	70269	60730	19163	18556	23010	8321	1218	16943
1962	77423	67041	19204	21698	26140	9064	1318	17210
1963	87553	75889	20216	26038	29634	10036	1627	17871
1964	102294	88976	24909	30869	33198	11193	2125	22252
1965	112975	98111	26529	33920	37661	12038	2826	23366
1966	126403	109229	28294	38378	42557	14474	2700	24693
1967	146249	125640	29969	47912	47760	17074	3535	25440
1968	170408	145842	32213	58352	55278	19475	5090	26834
1969	197440	169717	31182	72347	66188	22627	5097	25972
1970	227496	194801	34970	83277	76555	27283	5412	28502
1971	264474	226735	34351	102371	90013	31756	5982	26831
1972	317104	274287	38506	131284	104497	34568	8249	29030
1973	411524	358458	49543	179405	129510	41308	11758	36893
1974	551152	477270	68084	222972	186214	54160	19722	55417
1975	591369	510345	74658	234737	200950	65452	15573	61100
1976	709657	620741	80284	304607	235850	73652	15264	64169
1977	831250	727863	87637	363407	276819	85103	18284	67578
1978	994159	870928	92794	446857	331277	100698	22533	69146
1979	1198898	1057409	101988	540829	414592	122644	18845	76640
1980	1495036	1335240	114252	680304	540684	153005	6791	87605
1981	1773931	1600242	129496	806657	664089	195698	-22009	99565
1982	1899971	1707641	147041	842505	718095	221639	-29309	115950
1983	2100005	1874275	153331	944178	776766	236876	-11146	119023
1984	2343078	2109289	148414	1081510	879365	256689	-22900	113108
1985	2473786	2244162	143083	1144712	956367	273944	-44320	106324
1986	2855180	2566449	158326	1345071	1063052	292983	-4252	117659
1987	3237051	2909935	171728	1510912	1227295	314771	12345	123108
1988	3523193	3173920	177416	1579639	1416865	360915	-11642	128197
1989	3938826	3557270	192872	1666633	1697765	416967	-35411	144574
1990	4307043	3884158	180110	1775583	1928465	496878	-73993	131888
1991	4810705	4333108	182356	1975634	2175118	576080	-98483	138808
1992	5338952	4837636	191974	2139747	2505915	615292	-113976	147187
1993	5918376	5380640	215333	2328822	2836485	667082	-129346	163296
1994	6463600	5903079	227172	2437727	3238180	726048	-165527	174371
1995	7017933	6423567	244265	2552997	3626305	789696	-195330	187104
1996	7678126	7034381	245184	2742061	4047136	877254	-233509	191689
1997	8328780	7697439	212100	2941615	4543724	931804	-300463	164085
1998	8938967	8281441	220605	3090002	4970834	997795	-340269	169920
1999	9289929	8626475	237531	3082452	5306492	1043063	-379609	187688
2000	9663388	8950922	201810	3128699	5620413	1092418	-379952	158308

(C)	Industry							
	Forestry	Fishing	Mining	Manufacturing Electricity Gass,Water	Construction	Wholesale Retailsale	Transport Communication	
	1901-1948: NT\$							
1901				311		31	369	82
1902				307		26	411	94
1903				302		32	469	111
1904				356		33	441	110
1905	10	28	51	396	0	31	422	120
1906	9	32	50	408	0	44	493	143
1907	11	31	47	415	0	91	555	160
1908	8	35	65	579	0	99	541	168
1909	11	36	71	942	0	87	615	196
1910	17	49	73	1177	0	103	757	240
1911	17	43	79	1079	0	121	738	251
1912	17	45	98	665	0	168	884	266
1913	26	59	87	653	0	140	894	277
1914	57	66	96	911	0	107	811	262
1915	141	66	105	1483	0	102	847	283
1916	123	79	115	2139	0	168	954	272
1917	190	101	140	1913	0	311	1226	324
1918	189	155	149	2409	0	441	1488	402
1919	210	181	226	3072	33	513	2040	493
1920	271	195	236	2414	106	1034	2146	731
1921	246	207	219	1544	122	706	1795	736
1922	254	216	263	1907	151	437	1717	725
1923	256	299	270	2480	165	438	1793	727
1924	259	331	280	2455	165	381	2139	764
1925	277	354	307	2260	172	492	2466	802
1926	288	344	351	2039	186	475	2411	832
1927	323	356	434	2116	197	551	2258	742
1928	354	392	343	2611	217	678	2512	808
1929	317	442	312	2955	226	744	2523	797
1930	278	361	325	2524	231	619	2280	770
1931	249	279	284	2411	227	517	1923	733
1932	234	287	293	2852	235	570	2241	720
1933	242	339	328	3175	266	661	2264	811
1934	285	346	404	3444	272	746	2439	929
1935	288	407	476	3887	310	955	2926	1023
1936	341	450	594	4389	341	920	3166	1095
1937	330	388	733	4296	367	929	3165	1214
1938	289	380	1044	5136	522	1044	3712	1403
1939	355	568	1224	6298	686	1151	4584	1535
1940	457	809	1323	5971	814	1171	4419	1730
1941	667	825	1450	6362	1100	1504	5212	1719
1942	960	779	1400	6837	1125	1625	5192	2107
1943	1968	578	1425	8847	1850	1900	5920	2454
1944	1643	425	1500	11386	2550	3648	6955	2101
1945	9579	2046	1300	18223	1175	3525	14023	3070
1946	52823	23596	14700	81607	6000	19700	8365	15571
1947	383819	158410	120450	512932	31000	166975	27125	114746
1948	1565561	958806	1083575	4173018	478000	1207000	223669	1563522

(C)	Industry							
	Forestry	Fishing	Mining	Manufacturing	Electricity Gass,Water	Construction	Wholesale Retailsale	Transport Communication
	1949-2000: 1000000NT\$							
1949	48	104	31	406	21	117	295	91
1950	84	182	102	962	86	251	993	335
1951	126	274	173	1831	147	484	1696	529
1952	171	343	354	2227	155	669	3090	718
1953	200	401	406	2910	212	939	4254	885
1954	269	496	493	3992	234	1331	4343	973
1955	317	640	540	4700	290	1459	4989	1283
1956	323	719	763	5739	374	1551	5968	1446
1957	542	824	1002	7024	521	1633	6492	1973
1958	724	922	1265	7567	636	1733	7486	2078
1959	705	1233	1268	10080	783	1963	8239	2343
1960	804	1447	1407	11965	1041	2439	9625	2951
1961	709	1511	1411	13186	1265	2694	11169	3707
1962	603	1390	1812	15341	1525	3021	12547	4095
1963	781	1565	1798	19111	1643	3486	14280	4302
1964	873	1784	1777	23289	2014	3789	15842	5140
1965	1161	2002	2074	25018	2370	4459	17785	6031
1966	1365	2236	2339	28318	2688	5034	19302	7265
1967	2105	2424	2692	36264	2879	6077	21125	7880
1968	2298	3081	2646	44908	3561	7236	24007	9804
1969	1960	3250	2559	57124	4462	8202	28818	11655
1970	2067	4401	3041	65968	5494	8774	32746	13601
1971	2364	5156	3397	82730	5969	10276	38143	16328
1972	3019	6457	3914	108070	6820	12480	43334	19184
1973	4448	8203	4344	150655	7901	16505	50359	24103
1974	3953	8715	6636	179616	12072	24648	75789	31886
1975	3827	9731	7245	181485	15065	30942	77590	35326
1976	4266	11848	9218	238311	16978	40100	88050	41859
1977	4341	15718	9504	282854	20723	50326	102139	48904
1978	5368	18280	9999	352359	24545	59955	119532	59283
1979	5557	19790	11099	428227	27715	73789	146984	69845
1980	5272	21375	14094	535664	37444	93102	195546	88868
1981	5283	24648	15362	631227	59412	100656	235221	105608
1982	4245	26846	14699	668934	63424	95448	252928	113833
1983	4417	29891	14538	754729	77423	97488	273647	126851
1984	3414	31892	14145	879455	87983	99927	308310	146543
1985	3462	33297	14021	929142	99526	102023	327935	158563
1986	3850	36817	13795	1123528	99825	107923	370109	176167
1987	4288	44332	15034	1258998	110899	125981	417547	198510
1988	4805	44414	15870	1308726	106859	148184	467055	220481
1989	2545	45753	16576	1361050	113231	175776	531959	244858
1990	1424	46798	16592	1434545	121101	203345	611988	265272
1991	1446	42102	17796	1603842	128254	225742	702911	297917
1992	1284	43503	32984	1698719	145359	262685	806250	334033
1993	1431	50606	45326	1808804	159616	315076	905719	373121
1994	1605	51196	33033	1873978	170390	360326	1008857	412474
1995	1252	55909	33032	1959471	179111	381383	1147123	447430
1996	1070	52426	31334	2143654	190327	376746	1289625	488800
1997	990	47025	38631	2315420	195779	391785	1434915	530916
1998	981	49704	46777	2448395	205575	389255	1588691	588555
1999	846	48997	46391	2470012	207749	358300	1717692	625637
2000	813	42689	40427	2550380	208325	329567	1865320	648571

(D)	Industry			Non-Industry			Ajustment Items	
	Finance	Service for		Govern't	Non-Profit	Household	<i>Imputed</i>	Import
	Real Estates	Enterprises	Households	Service	Instituion	service		
	1901-1948: NT\$							
1901				106	3	11	-19	0
1902				118	3	12	-26	0
1903				122	4	13	-25	0
1904	268	0	0	90	3	9	-29	0
1905	257	65	188	94	3	10	-31	0
1906	315	76	227	103	3	11	-42	0
1907	339	86	239	109	3	11	-50	0
1908	347	84	241	122	4	13	-55	0
1909	430	95	290	128	4	13	-76	0
1910	485	117	333	171	5	18	-80	0
1911	481	114	313	187	5	19	-97	0
1912	660	137	400	205	6	21	-129	1
1913	721	134	411	202	6	23	-170	1
1914	666	119	384	208	6	21	-172	1
1915	813	113	347	201	6	19	-299	1
1916	978	116	365	199	6	21	-431	1
1917	1717	139	449	214	6	27	-916	1
1918	2368	147	488	220	7	34	-1352	0
1919	2704	232	572	242	9	45	-1390	109
1920	2774	300	1100	493	15	48	-1365	132
1921	2713	274	996	523	16	43	-1459	151
1922	2801	256	945	539	16	40	-1573	129
1923	3167	253	896	581	17	38	-1871	93
1924	3513	261	958	552	16	43	-2009	75
1925	3534	265	676	566	16	54	-1885	86
1926	3390	276	973	576	17	54	-1758	130
1927	2860	287	983	589	17	50	-1422	88
1928	2429	299	1036	620	18	54	-959	115
1929	2416	259	874	650	19	58	-933	114
1930	2294	252	869	704	20	53	-929	74
1931	2140	258	815	697	20	42	-971	62
1932	2259	258	780	679	19	49	-957	69
1933	2244	276	838	707	20	52	-911	57
1934	2262	270	791	712	21	55	-914	66
1935	2534	263	826	742	22	66	-910	66
1936	2754	302	886	762	23	71	-995	83
1937	4100	300	832	855	24	73	-807	63
1938	4165	322	879	945	25	99	-771	46
1939	4339	384	1034	1004	24	98	-759	62
1940	5548	434	1181	1120	25	127	-1094	69
1941	5140	443	1305	1275	25	125	-925	61
1942	5315	648	1788	1400	50	175	-975	72
1943	5343	768	2344	1675	50	250	-825	36
1944	6832	1382	4664	2000	50	251	-1025	25
1945	13421	2814	17277	2600	50	252	-1750	200
1946	67197	9620	60844	57575	1375	7000	-14875	1125
1947	388898	50353	283801	219100	7525	31575	-81475	15075
1948	4327945	438986	1995621	1162625	60725	211225	-1233325	268075

(D)	Industry			Non-Industry			Ajustment Items		
	Finance	Service for		Govern't	Non-Profit	Household	<i>Imputed</i>	Import	Value Added
	Real Estates	Enterprises	Households	Service	Instituion	service			
1949-2000: 1000000NT\$									
1949	344	27	115	82	3	12	-74	28	0
1950	796	85	353	863	12	38	-101	234	0
1951	1256	131	521	1341	18	55	-93	379	0
1952	1610	173	634	1667	20	85	-126	581	0
1953	2135	226	719	2036	32	119	-192	588	0
1954	2372	247	812	2608	45	130	-212	1021	0
1955	2783	298	922	3315	57	145	-377	1139	0
1956	3254	366	1077	3701	68	172	-492	1303	0
1957	4051	435	1225	3977	82	223	-609	1567	0
1958	4527	501	1348	4757	94	233	-755	1901	0
1959	4946	544	1646	5562	110	245	-840	1779	0
1960	5411	596	1849	6679	133	253	-970	1834	0
1961	6161	424	1550	7887	151	284	-1010	2228	0
1962	7139	530	1829	8588	170	306	-1036	2354	0
1963	8106	840	2106	9531	177	328	-1169	2796	0
1964	8933	964	2320	10611	224	358	-1236	3361	0
1965	9909	1130	2806	11416	247	375	-1699	4525	0
1966	11048	1225	3717	13790	279	405	-2080	4780	0
1967	12990	1454	4312	16301	338	435	-2454	5988	0
1968	15454	1276	4736	18615	385	476	-3064	8154	0
1969	18843	1393	5479	21542	474	611	-4018	9115	0
1970	21919	1530	6759	25900	638	745	-4898	10310	0
1971	25016	1847	8679	30169	783	805	-6018	12000	0
1972	29047	2589	10343	32638	996	934	-7088	15337	0
1973	38019	3506	13521	38933	1284	1091	-11044	22802	0
1974	53981	4680	19878	51149	1474	1538	-15597	35319	0
1975	59835	5283	22916	61705	1809	1938	-17865	33438	0
1976	71325	6538	28078	69136	2007	2508	-23892	39157	0
1977	84496	7936	33343	80182	2240	2681	-27406	45690	0
1978	103041	10007	39415	95198	2471	3029	-37090	59623	0
1979	137453	13295	47016	115709	2886	4050	-55820	74664	0
1980	178662	18162	59447	143891	3251	5862	-71132	77923	0
1981	219937	24715	78608	184321	3496	7881	-98259	76250	0
1982	233332	27711	90291	208006	4105	9528	-101677	72368	0
1983	244364	31204	100700	221467	4431	10978	-94794	83648	0
1984	277596	34339	112577	239184	4893	12612	-114585	91685	0
1985	305113	36114	128642	254272	5565	14107	-126103	81783	0
1986	334173	37975	144628	268945	8230	15808	-132381	92387	35742
1987	400031	40005	171202	289608	8301	16862	-141382	101903	51824
1988	490548	42518	196263	333341	9236	18338	-180071	109711	58718
1989	638520	54848	227580	382694	12632	21641	-228155	121688	71056
1990	719812	65777	265616	458477	13650	24751	-269819	114455	81371
1991	781505	77013	315772	532239	14754	29087	-311236	116632	96121
1992	910469	92544	362619	574708	16297	24287	-369337	138628	116733
1993	1039055	108955	409635	621128	17473	28481	-418667	152468	136853
1994	1225603	129262	461984	663743	28700	33605	-476514	160638	150349
1995	1351583	147913	532256	726590	23815	39291	-520139	172007	152802
1996	1497685	167830	603196	795667	29872	51715	-539648	150456	155683
1997	1711972	189279	676642	848859	28572	54373	-623390	158030	164897
1998	1819990	212428	761170	895887	43669	58239	-664239	153416	170554
1999	1890388	237144	835631	946549	33395	63119	-692599	139348	173642
2000	1937655	261783	907084	984982	39000	68436	-704555	146443	178160

Appendix Table 2 Real National Accounts

(A)	GDE	Private Consumption Expenditure	Government Consumption Expenditure	Gross Capital Formation	Inventory	Export	Import	Service Trade
	1000000NT\$ (1960 Prices)							
1901	7584	7930	163	386	0	763	1524	-134
1902	7787	8072	168	217	0	833	1355	-147
1903	9309	9430	175	315	0	866	1311	-165
1904	9010	8906	163	335	0	864	1103	-155
1905	7607	7653	168	318	0	912	1250	-194
1906	8020	7969	174	350	0	1098	1429	-141
1907	9199	9121	191	657	0	984	1514	-240
1908	9401	8973	195	978	0	1219	1799	-166
1909	10692	10094	193	781	0	1659	1790	-245
1910	11351	10361	328	965	0	2065	2353	-14
1911	10257	9237	341	1221	0	2465	2694	-313
1912	10585	10681	256	1185	0	2176	3298	-416
1913	11101	11829	208	911	0	1606	2990	-462
1914	11139	11462	230	794	0	2112	2890	-568
1915	11388	11131	235	669	0	3001	3062	-585
1916	12336	11174	232	523	0	3823	2918	-499
1917	13762	11245	236	1151	0	4753	3055	-567
1918	13553	11488	305	999	0	4272	3013	-498
1919	13597	11976	310	1519	0	4255	3990	-472
1920	13980	12792	310	2290	0	3174	3882	-703
1921	14860	13236	278	2228	0	3859	4280	-460
1922	16266	13610	339	1718	0	4836	3920	-316
1923	17193	14258	388	1880	0	5660	3987	-1006
1924	18331	15218	369	1443	0	6994	4216	-1477
1925	19414	16318	344	1863	0	6972	4985	-1099
1926	20221	17329	356	1960	0	7458	5519	-1363
1927	20096	16716	367	2332	0	8310	6213	-1416
1928	20424	16965	359	2697	0	7610	5965	-1242
1929	21946	17923	368	2857	0	8768	6715	-1255
1930	22778	19371	378	2598	0	8200	6614	-1156
1931	23335	19422	387	2559	0	9575	7389	-1218
1932	24066	20165	326	2994	0	10145	7704	-1859
1933	24075	19542	379	3337	0	8886	7362	-707
1934	24939	19790	377	3738	0	10540	8419	-1085
1935	27559	21155	360	4628	0	11298	9078	-804
1936	28877	21743	351	4996	0	12062	9742	-533
1937	29026	21744	423	3985	0	13061	9516	-671
1938	30173	21522	439	4163	0	12502	8878	426
1939	29492	20949	520	3336	0	14859	9062	-1111
1940	28417	22221	547	3127	0	12181	8712	-947
1941	27294	21800	595	3118	0	9113	7332	0
1942	28630	19270	763	4919	0	10694	7016	0
1943	26526	19347	913	4984	0	2740	1458	0
1944	22362	13947	1213	6222	0	1427	448	0
1945	11945	8434	1465	2043	0	29	26	0
1946	12626	11322	346	845	0	192	80	0
1947	15475	12948	466	1692	0	756	387	0
1948	20045	17533	570	2080	0	80	218	0

	GDE	Private Consumption Expenditure	Government Consumption Expenditure	Gross Capital Formation	Inventory	Export	Import
	1000000NT\$ (1960 Prices)						
1949	24166	19893	631	3780		111	249
1950	29321	21247	5288	3488		1923	2625
1951	31669	23362	6025	3308	1013	3512	5551
1952	35462	27093	6524	4374	1393	3537	7460
1953	38771	29388	6799	5539	874	4228	8056
1954	42470	32728	7895	5964	1136	3202	8456
1955	45912	34561	8512	5120	804	4081	7168
1956	48439	35301	9914	6047	1088	4613	8524
1957	52004	37426	10437	6017	1272	5285	8432
1958	55494	40396	11192	7195	832	5382	9502
1959	59740	42166	12013	8844	1287	6473	11043
1960	63111	43229	11992	10327	2250	7168	11855
1961	67452	45759	12794	11417	2445	9249	14212
1962	72783	50081	14102	11900	1944	9602	14846
1963	79591	52808	14450	13768	2345	12329	16108
1964	89301	59467	15078	14640	3590	15512	18986
1965	99244	63711	15454	18440	5608	18790	22758
1966	108089	67172	16510	23218	2291	22215	23317
1967	119667	72949	17900	28500	4858	25190	29730
1968	130642	79830	19305	34195	4294	32020	39002
1969	142333	85159	21048	38593	3831	39342	45640
1970	158517	90008	22136	44728	7077	48842	54275
1971	178958	96267	22752	54253	6227	63581	64123
1972	202790	105310	23281	62576	4407	83485	76268
1973	228814	115893	24129	68614	10467	102061	92351
1974	231472	118025	21527	76795	25365	92633	102874
1975	242880	130717	25407	93005	-1911	97179	101517
1976	276545	140789	27457	92698	9106	130196	123701
1977	304724	153504	30807	94520	8699	148370	131175
1978	346148	166715	32157	105490	10076	177815	146106
1979	374442	182679	34548	121867	20571	187518	172741
1980	401781	189955	36732	141779	13834	200083	180602
1981	426542	196753	37780	147726	9411	216620	181749
1982	441689	210709	40776	149695	-3347	224344	180488
1983	478998	224511	42193	145743	3812	259856	197117
1984	529770	246604	45304	149603	6152	306065	223959
1985	556007	266762	48922	139675	1170	318586	219108
1986	620736	281469	49722	152214	-5005	399362	257026
1987	699826	308520	52856	180216	13205	464911	319881
1988	754697	352525	57820	209029	29749	491055	385481
1989	816833	403052	64113	245753	15929	519217	431232
1990	860891	433662	74687	275041	9093	541772	473364
1991	925929	466519	80418	296064	16233	612698	546002
1992	995257	504298	82106	348369	22229	648249	609993
1993	1065063	548014	82841	378867	18544	699124	662327
1994	1140768	590444	80825	403541	15505	729575	679122
1995	1214051	616771	82434	434354	7251	810430	737190
1996	1288135	653490	87435	448761	15516	860270	777337
1997	1374142	690193	91137	504728	34725	923874	870515
1998	1436946	734154	94762	551890	35724	944830	924414
1999	1514885	746983	85582	555068	38314	1021114	932177
2000	1603633	791522	86888	633249	-42026	1211963	1077963



(B)	Production Accounts							
	GDP	Industry Total	Primary	Secondary	Tertiary	Govern't Etc.	Adjustment items	Industry Agriculture
	1000000NT\$ (1960 Prices)							
1901								
1902								
1903								
1904								
1905	7607	7539	3602	787	3150	67	-88	3075
1906	8020	7957	3701	692	3564	63	-102	3526
1907	9199	9125	4227	791	4107	75	-122	3792
1908	9401	9322	4117	1059	4146	79	-142	3708
1909	10692	10610	4166	1539	4905	82	-187	3314
1910	11351	11217	4427	1817	4973	134	-159	3537
1911	10257	10115	3711	1675	4730	142	-191	3251
1912	10585	10668	4322	1534	4812	133	-216	4029
1913	11101	11289	4489	1467	5333	130	-318	3749
1914	11139	11335	4778	1543	5014	131	-327	3751
1915	11388	11828	4602	1770	5456	130	-570	3741
1916	12336	12956	5170	2079	5707	145	-764	4183
1917	13762	15090	5425	2512	7154	160	-1488	4496
1918	13553	15056	5845	2146	7065	169	-1672	4823
1919	13597	14527	6010	2095	6422	154	-1085	3788
1920	13980	14837	6151	2355	6331	132	-988	3868
1921	14860	15941	7060	2276	6605	138	-1220	4243
1922	16266	17748	7471	2591	7686	151	-1633	4431
1923	17193	19023	7975	2836	8213	169	-1999	5383
1924	18331	20275	8327	2976	8971	175	-2118	5783
1925	19414	21106	8615	3436	9055	176	-1869	5752
1926	20221	21692	9327	3374	8991	167	-1638	5765
1927	20096	21378	9240	3697	8441	167	-1449	5633
1928	20424	21096	8650	4154	8292	173	-845	5431
1929	21946	22628	9532	4567	8530	177	-860	5986
1930	22778	23640	10489	4266	8886	186	-1048	6093
1931	23335	24515	10439	4864	9212	199	-1378	7233
1932	24066	25096	10223	4914	9959	201	-1231	6899
1933	24075	25010	10888	4691	9432	199	-1134	7460
1934	24939	25826	10440	5504	9882	214	-1101	7818
1935	27559	28344	11308	6313	10723	226	-1010	8282
1936	28877	29706	11413	6831	11462	231	-1060	8129
1937	29026	29579	11016	6415	12149	287	-841	7729
1938	30173	30631	10900	7283	12448	339	-797	7521
1939	29492	29727	10501	7507	11718	346	-582	6423
1940	28417	28788	11248	6577	10963	360	-731	6431
1941	27294	27455	11764	6034	9657	365	-526	5963
1942	28630	28720	14373	5824	8523	385	-475	4979
1943	26526	26456	12271	6206	7979	462	-392	5554
1944	22362	22199	7907	6688	7605	557	-394	4858
1945	11945	11709	5162	1716	4831	431	-195	4832
1946	12626	12518	8838	1046	2634	175	-68	5829
1947	15475	15354	9351	1749	4254	251	-130	7617
1948	20045	19998	11526	2717	5755	301	-254	8398

(B)	Production Accounts							
	GDP	Industry Total	Primary	Secondary	Tertiary	Govern't Etc.	Adustment items	Industry Agriculture
	1000000NT\$ (1960 Prices)							
1949	24166	23877	11188	4244	8444	395	-106	9552
1950	29321	26012	12170	4614	9228	2711	598	11042
1951	31669	27745	12561	5349	9835	3260	665	11265
1952	35462	31183	12523	6826	11834	3403	877	11200
1953	38771	34294	12614	8238	13441	3843	635	13289
1954	42470	36793	14053	9346	13394	4365	1311	14191
1955	45912	40017	14041	10871	15104	4850	1046	13714
1956	48439	41859	15068	11036	15755	5546	1034	14200
1957	52004	45044	15897	12100	17046	5844	1116	14944
1958	55494	48802	16014	13011	19777	5467	1226	15907
1959	59740	52172	17669	14624	19879	6564	1003	15817
1960	63111	55182	17898	16852	20432	7065	864	15647
1961	67452	59010	20068	18147	20795	7286	1156	16152
1962	72783	63892	20745	19691	23456	7676	1215	17007
1963	79591	69852	20661	22671	26520	8303	1436	16081
1964	89301	78898	24723	25963	28212	8621	1782	19802
1965	99244	87615	27585	28805	31226	9117	2512	22156
1966	108089	96017	29284	33059	33674	9725	2346	23866
1967	119667	106295	32369	37888	36038	10412	2960	24858
1968	130642	115821	31962	44878	38981	10777	4044	24495
1969	142333	126585	29634	52311	44640	11581	4166	22731
1970	158517	141093	30106	60719	50268	13045	4379	22986
1971	178958	159867	30473	72646	56747	14125	4967	22998
1972	202790	181479	30700	87580	63198	14656	6656	22346
1973	228814	206120	31173	105520	69427	15331	7362	22952
1974	231472	209345	31082	104550	73714	14202	7925	24204
1975	242880	219483	30594	109748	79141	16042	7356	22542
1976	276545	252462	32262	133870	86330	16944	7140	24269
1977	304724	277554	32364	149201	95989	18352	8819	24458
1978	346148	317034	30740	180124	106169	18994	10119	22675
1979	374442	345604	31193	192993	121418	20790	8047	23857
1980	401781	376629	30696	211247	134686	22403	2750	23790
1981	426542	406579	32374	226642	147563	24089	-4126	24990
1982	441689	420583	31640	231265	157678	26030	-4923	24781
1983	478998	452510	30586	261466	160458	26552	-63	23698
1984	529770	503995	29717	296435	177843	28400	-2625	23078
1985	556007	532098	31448	305596	195054	30741	-6832	23914
1986	620736	582916	32845	342629	207442	31051	6769	25101
1987	699826	654477	34966	387310	232202	32213	13136	27039
1988	754697	709867	34778	410054	265034	34946	9884	27586
1989	816833	771274	35821	429007	306446	37571	7988	30072
1990	860891	816506	33022	444424	339059	41820	2565	27493
1991	925929	877434	32868	475815	368751	46311	2184	27577
1992	995257	938916	30919	500971	407027	47264	9077	26559
1993	1065063	1004467	35039	528671	440757	49514	11081	30348
1994	1140768	1083993	35519	565080	483393	51790	4985	30530
1995	1214051	1164806	34332	613100	517374	54645	-5400	29933
1996	1288135	1238853	33832	640466	564555	59422	-10140	29504
1997	1374142	1337076	31686	695537	609853	58939	-21873	27970
1998	1436946	1403665	29093	726742	647830	60804	-27522	24800
1999	1514885	1494051	30883	775336	687832	59368	-38534	26826
2000	1603633	1589157	27962	842047	719148	59741	-45265	23436

(C)	Industry							
	Forestry	Fishing	Mining	Manufacturing	Electricity Gass,Water	Construction	Wholesale Retailsale	Transport Communication
	1000000NT\$ (1960 Prices)							
1901			73					
1902			112					
1903			113					
1904			149					
1905	286	44	181	503		93	1312	87
1906	286	44	168	416		115	1655	106
1907	286	44	154	425		208	1986	128
1908	286	44	222	605		228	2002	135
1909	603	61	231	1054		243	2215	153
1910	481	45	241	1307		247	2271	167
1911	231	36	269	1073		319	2135	164
1912	240	53	393	766	0	375	2031	156
1913	664	76	386	761	0	320	2305	166
1914	938	90	431	857	0	254	2152	174
1915	756	104	510	1047	0	212	2415	193
1916	892	95	516	1377	0	187	2604	219
1917	822	106	587	1477	0	447	2714	252
1918	929	92	457	1356	0	334	2710	282
1919	2126	96	475	1179	4	438	2729	250
1920	2145	138	442	1246	11	655	2628	279
1921	2679	139	448	1229	13	586	2489	274
1922	2844	196	556	1491	16	528	2646	299
1923	2399	193	556	1726	23	530	2724	322
1924	2364	180	632	1870	25	449	3098	336
1925	2667	196	687	2092	27	629	3460	367
1926	3319	243	793	1976	28	577	3406	362
1927	3355	252	866	2131	31	669	3300	365
1928	2936	283	726	2588	34	806	3630	390
1929	3244	301	797	2888	35	846	3839	411
1930	4072	324	648	2849	38	731	4095	390
1931	2944	262	802	3260	43	759	3811	391
1932	3008	316	837	3082	50	946	4300	385
1933	3145	283	873	2722	57	1039	3911	398
1934	2366	256	1009	3262	68	1165	4201	473
1935	2748	279	1001	3721	86	1505	4638	546
1936	3008	277	1105	3973	123	1630	4732	544
1937	3001	285	1136	3879	142	1259	4512	571
1938	3013	366	1190	4622	180	1291	4827	660
1939	3585	493	1218	4867	196	1226	4948	682
1940	4394	422	1225	4112	196	1044	3922	728
1941	5459	342	1133	3650	225	1026	3762	764
1942	9161	233	823	3804	225	972	3261	524
1943	6540	177	932	3899	287	1087	2484	658
1944	2912	137	896	4048	313	1431	2045	626
1945	220	110	322	1011	109	275	1846	294
1946	2872	137	197	581	63	205	1101	185
1947	1546	189	302	866	110	472	1697	311
1948	2858	271	444	1589	156	528	2383	420

(C)	Industry							
	Forestry	Fishing	Mining	Manufacturing	Electricity Gass,Water	Construction	Wholesale Retailsale	Transport Communication
	1000000NT\$ (1960 Prices)							
1949	1239	397	479	2760	222	784	3317	692
1950	825	304	471	2956	298	889	3564	636
1951	968	327	563	3351	396	1039	4012	853
1952	997	325	764	4436	424	1202	5933	997
1953	1016	356	721	5445	450	1622	6781	1148
1954	1286	431	743	6310	532	1760	6952	1339
1955	1627	553	835	7070	567	2399	7153	1563
1956	1571	640	927	7641	652	1815	8060	1740
1957	2030	674	1003	8407	701	1990	7942	2072
1958	2101	663	1017	8455	719	2820	8502	2240
1959	2415	760	1208	10454	888	2074	9324	2728
1960	804	1447	1407	11965	1041	2439	9625	2951
1961	2959	956	1636	13063	1148	2300	10389	3047
1962	2762	975	1802	13999	1316	2574	11473	3435
1963	3513	1067	1946	16243	1460	3021	12815	3776
1964	3798	1123	2011	19075	1620	3257	13600	4155
1965	4281	1148	2068	21235	1799	3703	15144	4606
1966	4204	1215	2118	25065	1971	3905	15898	5142
1967	6189	1322	2190	28928	2222	4547	16512	5845
1968	5888	1579	2198	35038	2574	5068	17211	6964
1969	5333	1571	2163	41451	2990	5706	19660	8141
1970	5216	1904	2235	48845	3692	5946	21632	9285
1971	5423	2051	2366	59226	4175	6880	24469	10482
1972	6175	2179	2416	71836	5000	8328	26585	11880
1973	5888	2333	2340	87840	5719	9622	26753	13312
1974	4727	2151	2261	85071	5864	11354	27481	14829
1975	5679	2373	2356	87374	6458	13560	28136	17199
1976	5517	2476	2679	107617	7485	16090	29938	18971
1977	5180	2725	2696	119803	8362	18339	33167	21136
1978	5169	2896	2720	148211	9439	19754	35816	22862
1979	4462	2874	2629	158282	10540	21543	39760	25226
1980	4196	2710	2768	173389	11457	23632	45011	26722
1981	4620	2764	2817	187868	11675	24283	49081	28993
1982	4054	2805	2703	192368	12517	23677	52244	32366
1983	4074	2814	2630	222262	14117	22458	53572	32486
1984	3575	3065	2560	254990	15974	22911	59682	34949
1985	4257	3276	2578	260728	18389	23902	65754	37395
1986	4443	3301	2487	297135	18654	24352	72693	38390
1987	4035	3892	2455	338352	20249	26253	79590	41897
1988	3207	3986	2475	355744	22400	29435	88074	45306
1989	1897	3852	2490	370223	23916	32378	95757	49465
1990	1282	4248	2438	379723	26186	36077	108527	53500
1991	1473	3818	2589	405057	29172	38996	123237	58328
1992	744	3616	3006	421764	30559	45642	138502	61435
1993	1055	3636	3504	440097	32660	52411	150658	65559
1994	941	4047	3423	470680	34601	56378	160386	69075
1995	956	3442	3302	516128	36698	56972	169787	73691
1996	843	3485	2867	543232	38913	55453	186612	81496
1997	825	2891	2583	597216	39939	55799	197602	83209
1998	1112	3181	2466	628374	41877	54025	213600	92564
1999	935	3122	2233	683439	41063	48600	225278	110441
2000	1967	2559	2047	752638	42750	44611	230902	124708

(D)	Industry			Non-Industry			Ajustment Items	
	Finance	Service for		Govern't	Non-Profit	Household	<i>Imputed</i>	Import
	Real Estates	Enterprises	Households	Service	Instituion	service		
1000000NT\$ (1960 Prices)								
1901				51				
1902				57				
1903				59				
1904				55				
1905	772	208	770	57			-88	
1906	813	262	728	59			-102	
1907	783	315	894	65			-122	
1908	816	318	875	69			-142	
1909	1173	351	1013	69			-187	
1910	1123	360	1053	109			-159	
1911	1192	339	900	119			-191	
1912	1363	322	939	117	4	13	-218	1
1913	1546	324	992	113	4	14	-320	2
1914	1467	289	931	115	4	12	-329	2
1915	1621	302	926	115	4	12	-573	2
1916	1462	342	1079	127	4	14	-766	2
1917	2689	355	1143	137	4	19	-1489	2
1918	2609	338	1125	141	5	23	-1673	1
1919	2394	303	746	125	5	25	-1255	170
1920	2128	278	1018	116	4	12	-1152	164
1921	2558	277	1007	123	4	11	-1452	232
1922	3318	304	1119	136	4	11	-1850	217
1923	3702	323	1143	153	5	11	-2158	159
1924	3984	333	1221	157	5	13	-2245	127
1925	4014	342	872	156	5	16	-2011	142
1926	3758	324	1141	148	5	15	-1854	216
1927	3315	330	1131	149	5	13	-1605	156
1928	2754	340	1178	154	5	14	-1041	196
1929	2730	355	1195	157	5	15	-1049	190
1930	2829	353	1218	167	5	14	-1190	142
1931	3274	418	1317	181	6	12	-1527	149
1932	3483	445	1345	181	6	14	-1386	156
1933	3284	455	1383	179	6	14	-1248	114
1934	3293	487	1427	193	6	16	-1243	142
1935	3600	468	1471	200	6	19	-1141	131
1936	4136	522	1528	204	6	20	-1211	151
1937	5090	524	1452	256	8	24	-954	113
1938	4859	564	1537	297	8	34	-871	74
1939	4068	548	1474	306	8	32	-662	81
1940	4333	532	1448	314	8	38	-807	76
1941	3324	458	1348	324	7	34	-584	58
1942	3011	460	1268	328	13	44	-539	64
1943	2800	502	1534	388	12	62	-415	23
1944	2699	511	1724	480	13	65	-407	13
1945	1305	194	1191	383	8	40	-209	14
1946	505	115	728	152	4	20	-79	11
1947	946	239	1061	211	8	32	-171	42
1948	1495	254	1203	241	13	47	-376	122

(D)	Industry			Non-Industry			Adjustment Items		
	Finance	Service for		Govern't	Non-Profit	Household	<i>Imputed</i>	Import	Value Added
	Real Estates	Enterprises	Households	Service	Institution	service			
1000000NT\$ (1960 Prices)									
1949	2370	472	1593	330	13	52	-535	429	0
1950	2831	531	1665	2553	38	120	-360	958	0
1951	2729	451	1791	3080	44	135	-224	889	0
1952	2917	427	1560	3186	41	175	-244	1121	0
1953	3663	442	1408	3580	56	207	-311	946	0
1954	3210	441	1452	4095	69	201	-338	1649	0
1955	4502	461	1425	4579	76	194	-554	1600	0
1956	3908	519	1527	5213	95	238	-668	1701	0
1957	4937	550	1546	5442	108	293	-744	1860	0
1958	6944	567	1525	5106	104	256	-875	2101	0
1959	5310	626	1893	6166	124	275	-957	1961	0
1960	5411	596	1849	6679	133	253	-970	1834	0
1961	5756	344	1259	6904	132	250	-997	2153	0
1962	6675	412	1460	7270	145	261	-997	2212	0
1963	7596	642	1691	7882	148	273	-1091	2527	0
1964	8059	674	1725	8169	174	277	-1083	2865	0
1965	8758	712	2006	8643	188	286	-1472	3984	0
1966	9569	718	2346	9263	189	274	-1756	4102	0
1967	10449	734	2498	9938	207	267	-1973	4933	0
1968	11494	615	2697	10298	215	265	-2374	6418	0
1969	13409	610	2819	11021	245	316	-2971	7137	0
1970	15597	634	3120	12316	337	393	-3548	7927	0
1971	17567	646	3584	13406	354	364	-4254	9221	0
1972	19691	845	4196	13777	453	425	-4695	11351	0
1973	23300	1194	4868	14425	490	417	-6385	13747	0
1974	24900	1165	5339	13383	401	418	-6885	14809	0
1975	26919	1145	5742	15088	461	494	-7756	15111	0
1976	30050	1204	6167	15858	482	603	-9842	16982	0
1977	33549	1222	6915	17237	508	608	-10613	19432	0
1978	38722	1326	7442	17900	492	603	-13709	23828	0
1979	46880	1484	8067	19549	517	725	-18677	26724	0
1980	52518	1716	8720	20993	503	907	-20587	23337	0
1981	57645	1834	10010	22619	452	1018	-25465	21339	0
1982	60014	1992	11062	24343	508	1179	-25555	20631	0
1983	60526	2098	11776	24727	525	1300	-23417	23353	0
1984	68004	2248	12960	26355	572	1474	-28097	25472	0
1985	74903	2356	14645	28402	662	1677	-30626	23795	0
1986	78514	2356	15488	28346	926	1779	-30538	26900	10407
1987	90646	2413	17656	29463	907	1843	-32396	30182	15350
1988	109414	2491	19750	32100	954	1893	-41146	33240	17790
1989	136227	2998	21998	34279	1213	2079	-50529	36944	21572
1990	148911	3411	24711	38378	1224	2219	-58200	35516	25250
1991	154585	3836	28765	42553	1265	2493	-64793	36717	30260
1992	171403	4420	31267	43905	1349	2010	-73779	44980	37876
1993	185599	5037	33905	45826	1402	2286	-80218	48113	43186
1994	211920	5744	36269	46944	2232	2614	-90271	49204	46052
1995	227599	6327	39970	49856	1807	2982	-97658	48857	43402
1996	245708	6944	43795	53294	2244	3884	-98334	43344	44850
1997	275600	7376	46067	53028	2036	3874	-112320	44262	46185
1998	284428	7894	49343	53747	3024	4033	-116684	42223	46939
1999	293618	8168	50326	53012	2199	4156	-124765	38392	47840
2000	302874	8681	51983	52829	2509	4403	-130572	38486	46821